

Operator  
Telephone  
Fax  
e-Mail

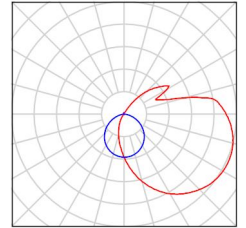
---

**Project 1 / Luminaire parts list**

1 Pieces

Article No.:  
Luminous flux (Luminaire): 4293 lm  
Luminous flux (Lamps): 4293 lm  
Luminaire Wattage: 40.7 W  
Luminaire classification according to CIE: 76  
CIE flux code: 28 54 79 76 100  
Fitting: 0 x User defined (Correction Factor 1.000).

See our luminaire catalog for an image of the luminaire.

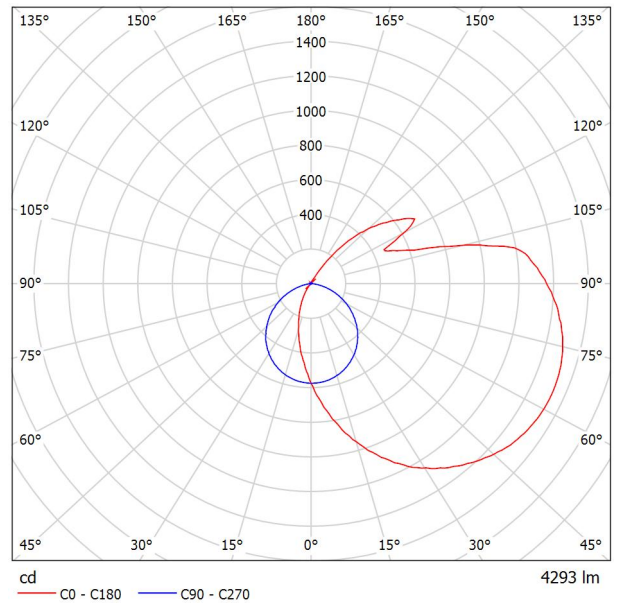


Operator  
 Telephone  
 Fax  
 e-Mail

**/ Luminaire Data Sheet**

See our luminaire catalog for an image of the luminaire.

Luminous emittance 1:

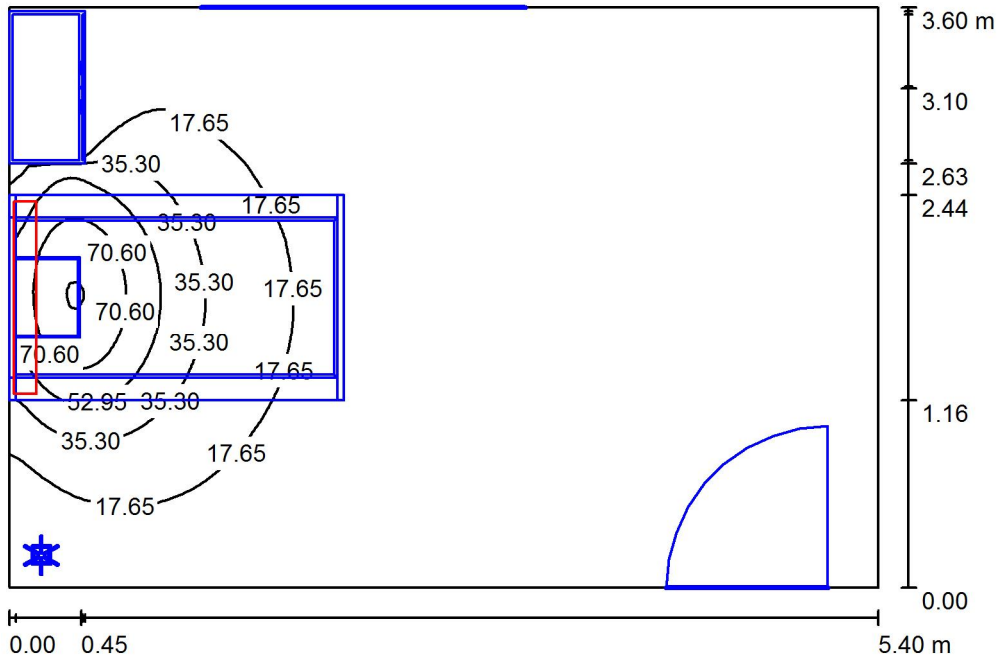


Luminaire classification according to CIE: 76  
 CIE flux code: 28 54 79 76 100

Due to missing symmetry properties, no UGR table can be displayed for this luminaire.

Operator  
Telephone  
Fax  
e-Mail

Room 1 / Summary



Height of Room: 2.800 m, Mounting Height: 1.500 m, Light loss factor: 0.80 Values in Footcandles, Scale 1:47

Surface	$\rho$ [%]	$E_{av}$ [fc]	$E_{min}$ [fc]	$E_{max}$ [fc]	$u_0$
Workplane	/	13	2.18	90	0.164
Floor	68	6.66	0.15	21	0.023
Ceiling	70	6.41	3.63	12	0.567
Walls (4)	50	7.25	0.09	33	/

Workplane:

Height: 0.680 m  
Grid: 128 x 128 Points  
Boundary Zone: 0.000 m

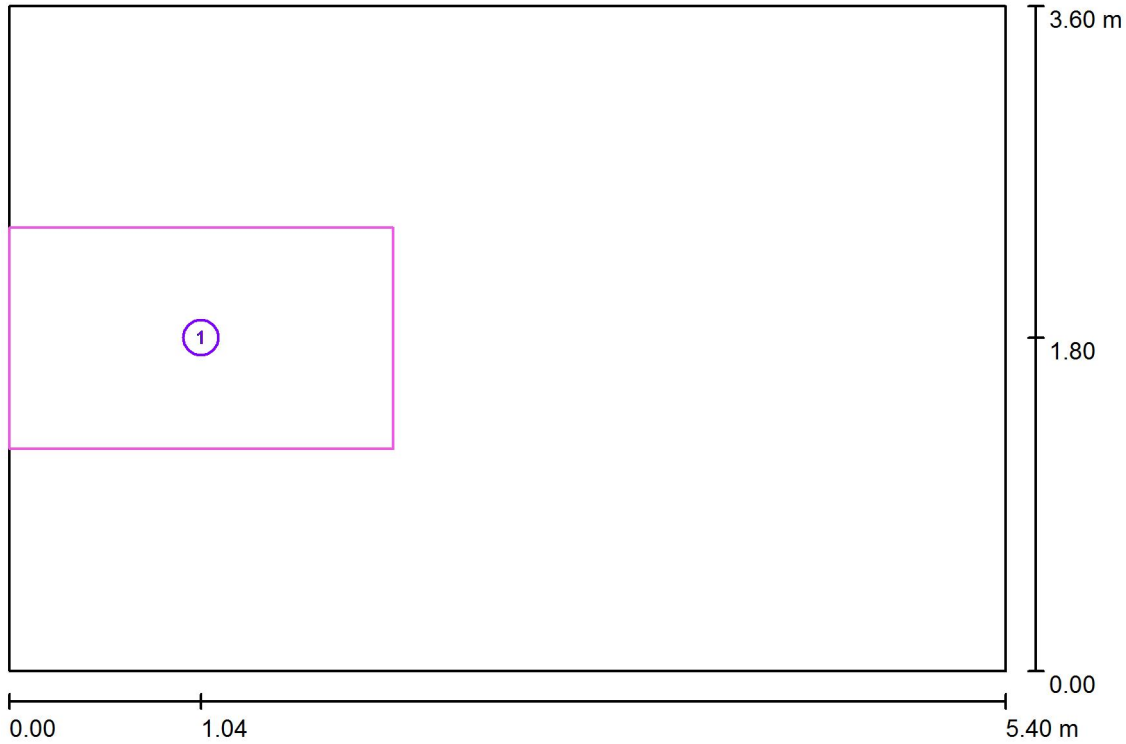
Luminaire Parts List

No.	Pieces	Designation (Correction Factor)	$\Phi$ (Luminaire) [lm]	$\Phi$ (Lamps) [lm]	P [W]
1	1	(1.000)	4293	4293	40.7
			Total: 4293	Total: 4293	40.7

Specific connected load:  $2.09 \text{ W/m}^2 = 1.58 \text{ W/m}^2/10 \text{ fc}$  (Ground area:  $19.44 \text{ m}^2$ )

Operator  
 Telephone  
 Fax  
 e-Mail

**Room 1 / Calculation surfaces (results overview)**



Scale 1 : 41

**Calculation Surface List**

No.	Designation	Type	Grid	$E_{av}$ [fc]	$E_{min}$ [fc]	$E_{max}$ [fc]	u0	$E_{min} / E_{max}$
1	Calculation Surface 1	perpendicular	64 x 64	37	14	67	0.362	0.203

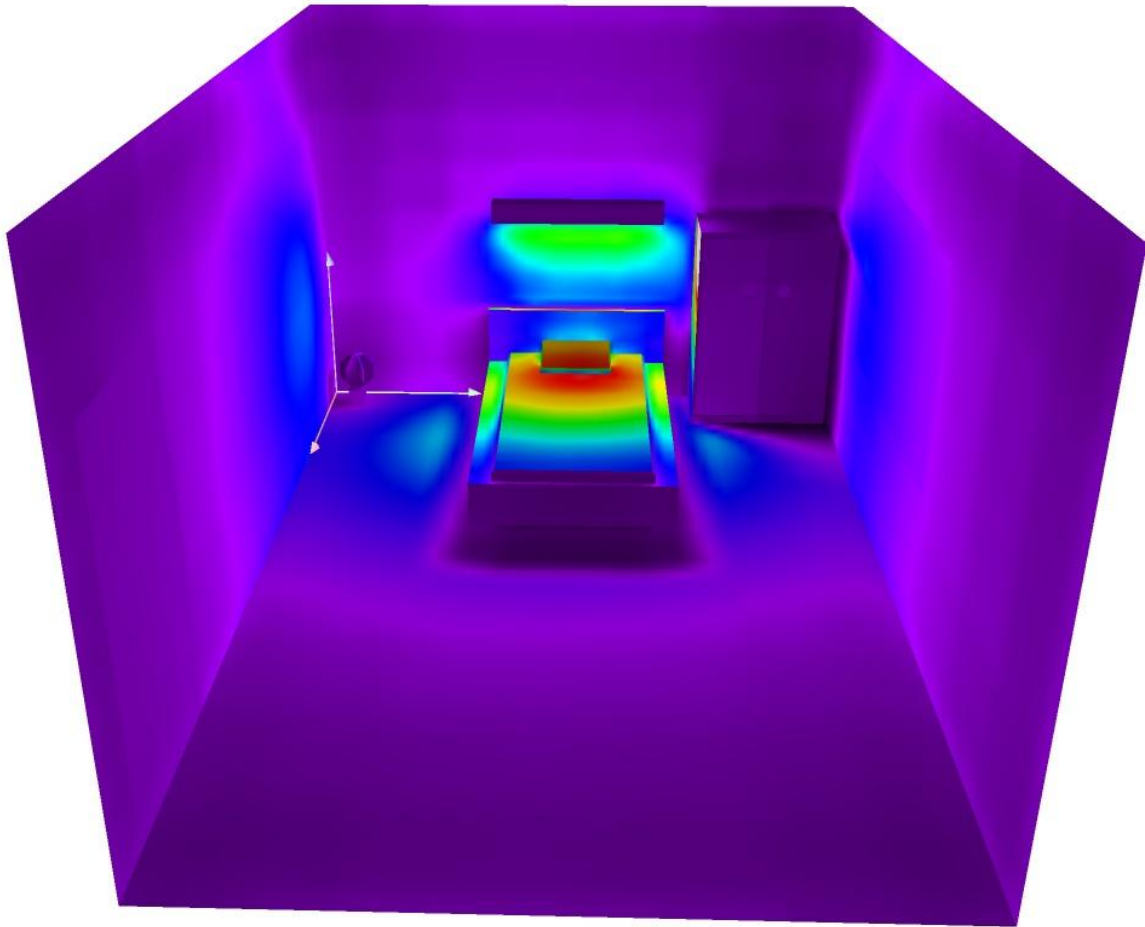
Operator  
Telephone  
Fax  
e-Mail

Room 1 / 3D Rendering



Operator  
Telephone  
Fax  
e-Mail

Room 1 / False Color Rendering



0

7.50

15.00

22.50

30.00

37.50

45.00

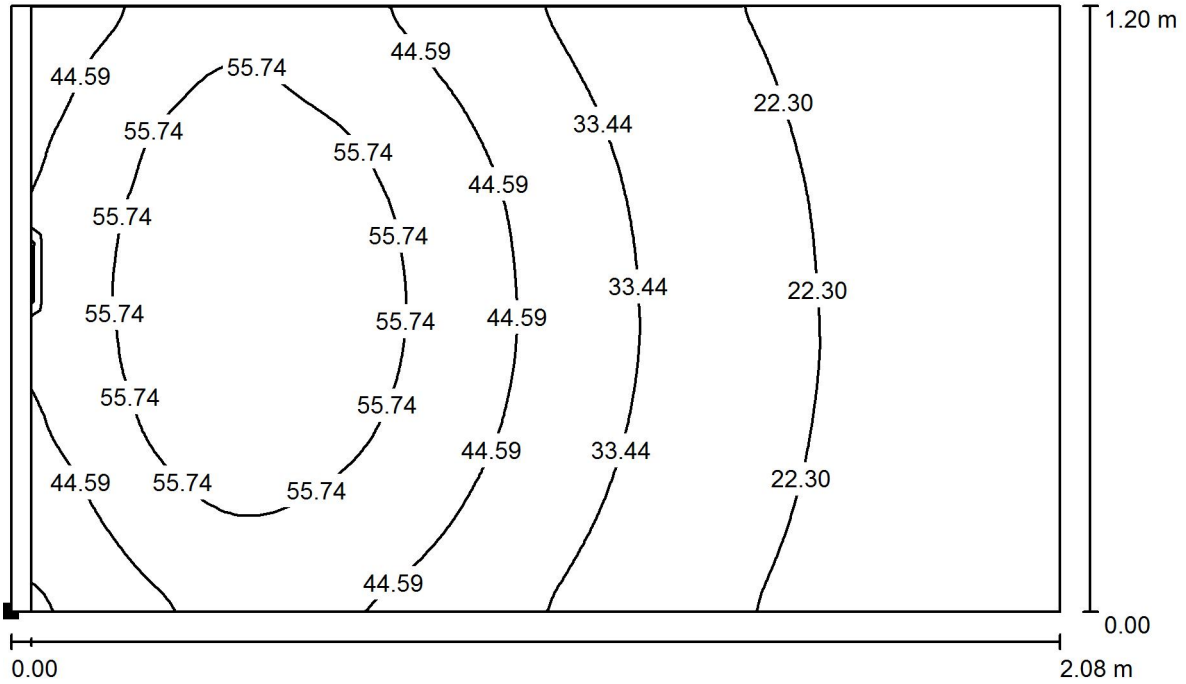
52.50

60.00

fc

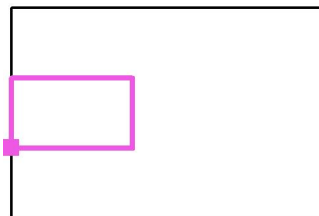
Operator  
 Telephone  
 Fax  
 e-Mail

**Room 1 / Calculation Surface 1 / Isolines (E, Perpendicular)**



Values in Footcandles, Scale 1 : 15

Position of surface in room:  
 Marked point:  
 (0.000 m, 1.200 m, 0.500 m)



Grid: 64 x 64 Points

$E_{av}$  [fc]  
 37

$E_{min}$  [fc]  
 14

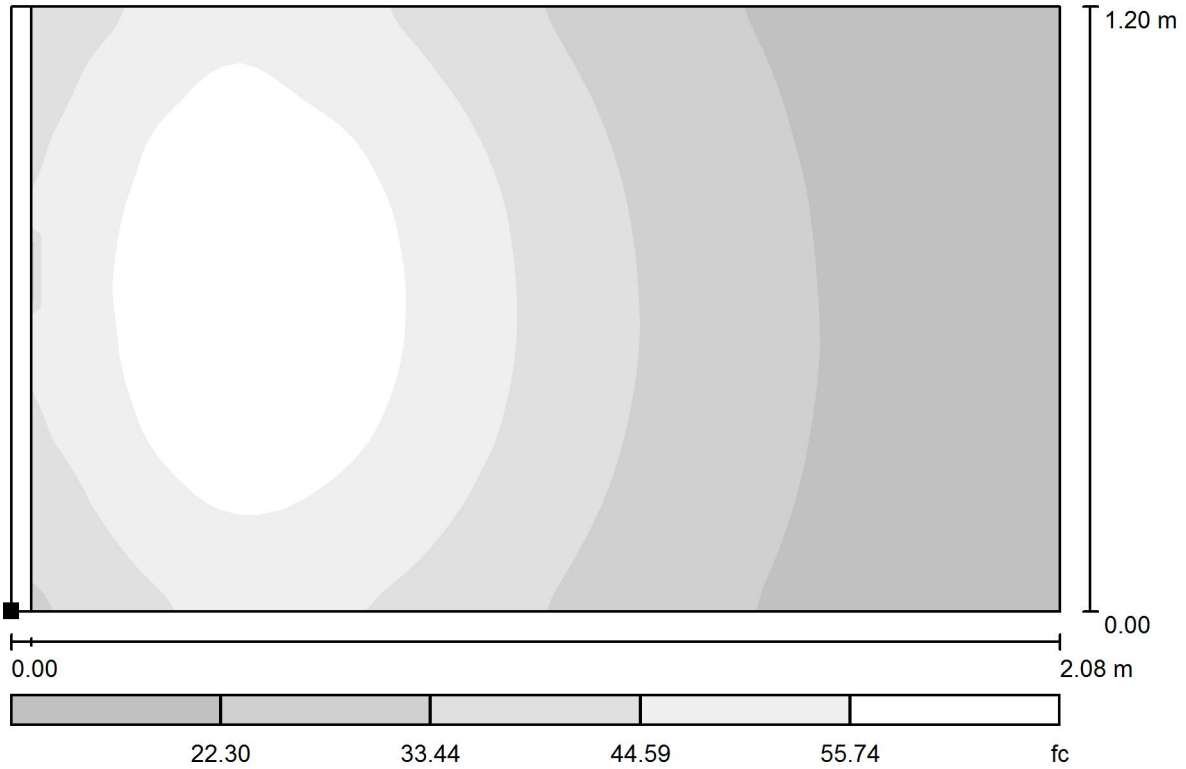
$E_{max}$  [fc]  
 67

$u_0$   
 0.362

$E_{min} / E_{max}$   
 0.203

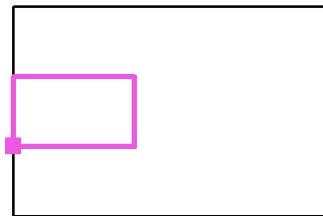
Operator  
 Telephone  
 Fax  
 e-Mail

Room 1 / Calculation Surface 1 / Greyscale (E, Perpendicular)



Scale 1 : 15

Position of surface in room:  
 Marked point:  
 (0.000 m, 1.200 m, 0.500 m)



Grid: 64 x 64 Points

$E_{av}$ [fc]	$E_{min}$ [fc]	$E_{max}$ [fc]	u0	$E_{min} / E_{max}$
37	14	67	0.362	0.203