

sunlite®

INSTALLATION INSTRUCTIONS

LED TALL PACK W/PHOTO CONT | 88116-SU LFX/TP/12W/30K/PC
LED TALL PACK W/PHOTO CONT | 88118-SU LFX/TP/12W/50K/PC

Please read and understand this entire manual before attempting to assemble, operate or install the product.

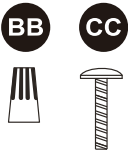
WARNING: Avoid fire or electric shock. Follow installation instructions carefully. If unsure about electrical installation, consult a qualified electrician. Wear rubber-soled shoes and work on a sturdy wooden ladder. Ground fixture to avoid potential electric shock. Handle metal parts carefully to prevent cuts. To avoid a hazard to children, account for all parts and destroy all packing materials.

This device complies with part 15 of the FCC rules. Operation is subject to the following two conditions: (1) This device may not cause harmful interference, and (2) this device must accept any interference received, including interference that may cause undesired operation.

CAUTION: Turn off the power at fuse or circuit breaker box before installation and maintenance. NOTE: This fixture is suitable for 120Volts fused circuit. Fixture must be installed according to National Electric Code and local building codes. If you are unsure about wiring, consult a qualified electrician. Suitable for wet Locations.



Introduction

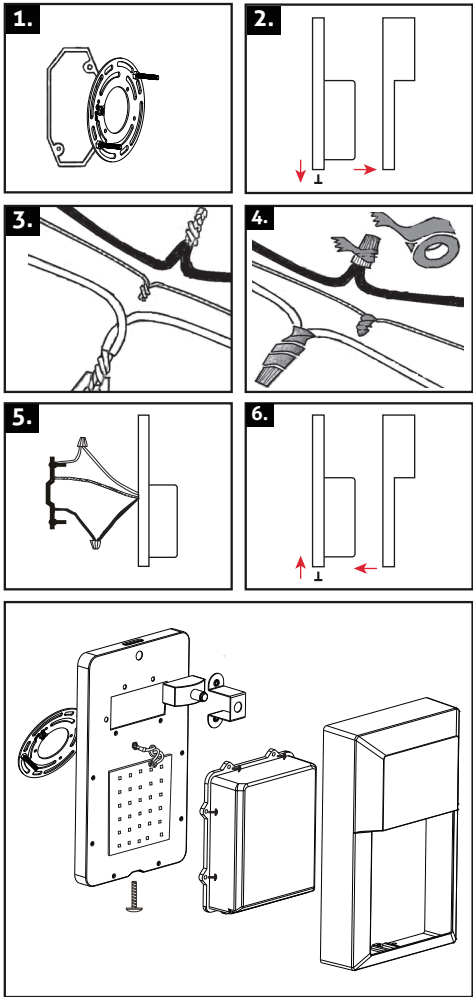


Part	Item Name
A	LED TALL PACK W/PHOTO CONT
BB	Wire Nuts
CC	4X30MM Screws

Before beginning assembly and installation of product, make sure all parts are present. Compare parts with package contents list and diagram above. If any part is missing or damaged, do not attempt to assemble, install or operate the product. Contact customer service for replacement parts.

MIN 75°C SUPPLY CONDUCTOR

Installation



WARNING :

Make sure power is off before installing or servicing any part of this fixture.

1. Attach mounting bracket to J-box with included screws.
2. Remove the fixture frame from the metal base by loosening thumb screw on the bottom.
3. Strip 1/2 inch of insulation from wire ends. Twist stripped ends together with pliers black to black (power) and white to white (neutral). Attach copper wire to ground wire. Helpful Hint: If necessary, attach copper ground wire to grounded junction box.
4. Attach wire nuts. Tape wire nuts and wires together with electrical tape.
5. Attach the fixture to the wall by aligning the screws that protrude from the crossbar into the holes on the metal base. Secure the fixture until it is held firmly to the wall.
6. Position frame over metal base and screw with 1 thumb screw until fixture is secure.
7. Turn Power on.

Sunshine Lighting Company
744 Clinton Street Brooklyn, NY 11231, USA
T. 718.768.7000
F. 718.768.0970
www.sunlite.com