

sunlite®

INSTALLATION INSTRUCTIONS

LED FLUSH MOUNT DISC FIXTURE | 88209-SU, 88210-SU



Please read and understand this entire manual before attempting to assemble, operate or install the product.

WARNING: Avoid fire or electric shock. Follow installation instructions carefully. Risk of fire or electric shock. LED Retrofit Kit installation requires knowledge of luminaires electrical systems. If not qualified, do not attempt installation. Contact a qualified electrician.

Install this kit only in luminaires that have the construction features and dimensions shown in the photographs and/or drawings and where the input rating of the retrofit kit does not exceed the input rating of the luminaire. Wear rubber-soled shoes and work on a sturdy ladder. Ground fixture to avoid potential electrical shock. Do not make or alter any open holes in an enclosure of wiring or electrical components during kit installation. To prevent wiring damage or abrasion, do not expose wiring to edges of sheet metal or other sharp objects.

CAUTION: Turn off the power at fuse or circuit breaker box before installation and maintenance to avoid electric shock. This retrofit should be used on 120-Volt fused circuits. Fixture must be installed according to National Electric Code and local building codes. If you are unsure about wiring consult a qualified electrician. THIS FIXTURE BODY IS ONE PIECE, DO NOT DISASSEMBLE OR MAKE ALTERATIONS. Not to be used for emergency lighting. Suitable for damp locations.

This device complies with part 15 of the FCC Rules. Operation is subject to the following two conditions: (1) this device may not cause harmful interference, and (2) this device must accept any interference received, including that may cause undesired operation.

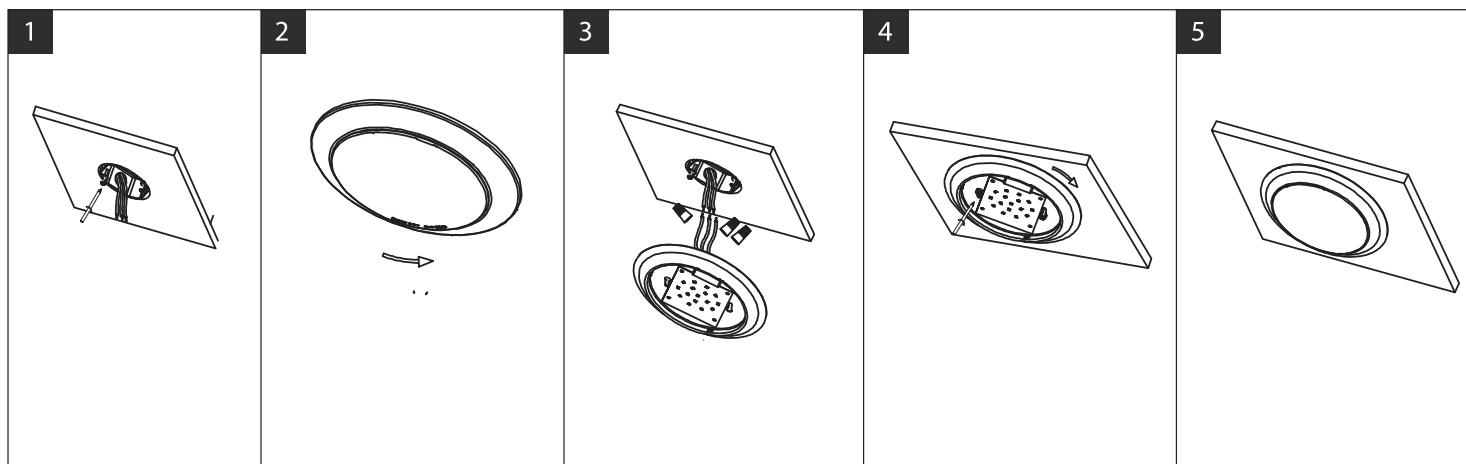
Retain these instructions for future maintenance reference.

DIMMABLE

The lamp may not be compatible with all dimmers.
Go to www.Sunlite.com/Dimmers to find dimmer compatibility information.



Installation



STEP 1. Make sure the power is turned off at the source to the junction box. We need to get 8#-36 screws in parts package ,fitted to corresponding holes and slide the screws to certain position.(see image 1).

STEP 2. The PC cover on the lamp is twisted down anticlockwise (see image 2).

STEP 3. Get the reserved wire in the junction box, using wiring caps to tighten corresponding wires of the lamp. (see image 3).

Connect incoming ground wire (green or bare) to fixture ground wire (Green or Bare). Connect incoming common (white) wire to fixture common (white). Connect incoming hot (typically Black) wire to fixture Black wire.

STEP 4. The screw hole is locked to a certain position in step 1, and the screw is tightened when it is rotated clockwise to no longer rotation.

STEP 5. Install the PC cover in the corresponding clip of the lamp, rotate it to the position that can't be rotated again.

STEP 6. Restore power at the source.

Sunshine Lighting Company

744 Clinton Street Brooklyn, NY 11231, USA

T. 718.768.7000

F. 718.768.0970

www.sunlite.com