



# INSTALLATION INSTRUCTIONS FOR LED LIGHT ENGINE RETROFIT

Please read and understand this entire manual before attempting to assemble, operate or install the product.

**WARNING:** Risk of fire or electric shock. Follow installation instructions carefully. If unsure about electrical installation, consult a qualified electrician. Wear rubber-soled shoes and work on a sturdy wooden ladder. Ground fixture to avoid potential electric shock. Handle metal parts carefully to prevent cuts. To avoid a hazard to children, account for all parts and destroy all packing material. This product is only suitable for indoor applications. Suitable for damp locations.

Install this kit only in luminaires that have the construction features and dimensions listed in the instructions. Do not alter fixture in any way unless specified here.

**CAUTION:** Turn off the power at fuse or circuit breaker box before installation and maintenance. NOTE: This retrofit kit is only suitable for 120-Volt fused circuits. Fixture must be installed according to National Electric Code and local building codes. If you are unsure about wiring, consult a qualified electrician. THIS RETROFIT KIT IS ONE PIECE, DO NOT DISASSEMBLE OR MAKE ALTERATIONS.

**This device complies with part 15 of the FCC Rules. Operation is subject to the following two conditions: (1) this device may not cause harmful interference, and (2) this device must accept any interference received, including that may cause undesired operation.**

This fixture may not be compatible with all dimmers. Please visit [www.Sunlite.com/Dimmers](http://www.Sunlite.com/Dimmers) for dimmer compatibility information.



## Minimum Required Dimensions Within Fixture

Light Engine	3"	4"	6"	7"
Diameter	3.3"	4.4"	5.8"	7.4"
Height	0.8"	0.8"	0.8"	0.8"

## Installation

**BEFORE PROCEEDING, PLEASE ENSURE POWER HAS BEEN SWITCHED OFF!**

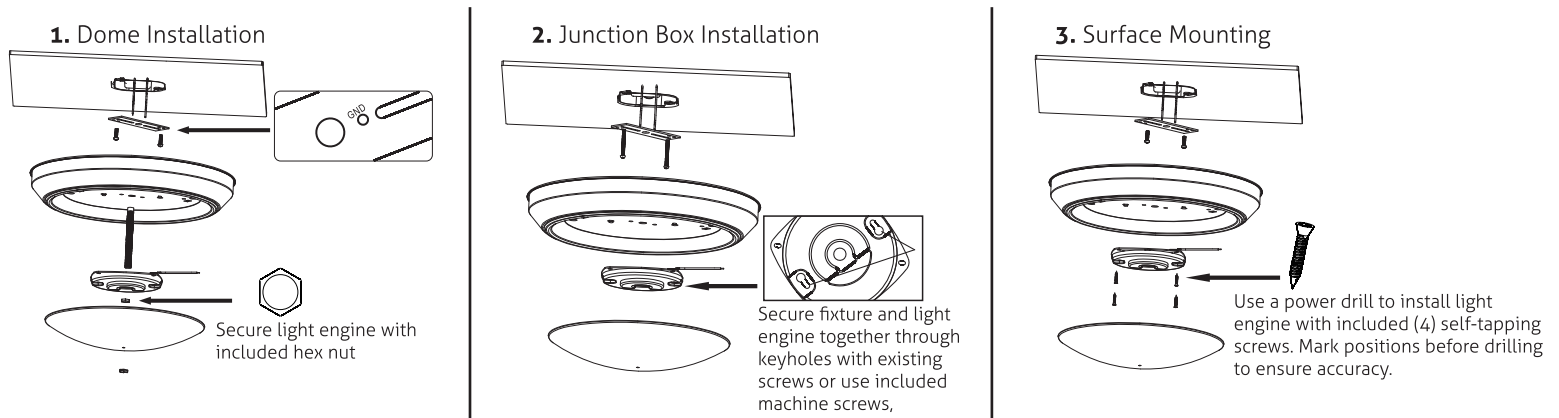
**STEP 1.** Remove the diffuser lens from fixture

**STEP 2.** Remove fixture from mounted surface and disconnect wires.

**STEP 3.** Remove sockets, brackets, and ballasts from fixture.

**STEP 4.** Push wires from light engine through the back of fixture.

**STEP 5.** Choose mounting method (below) for light engine.



**STEP 6.** Connect LED light engine to wires (Black to Black (L), White to White (N), and Green to Green (G).)

**STEP 7.** Place provided caution label on visible part of fixture.

**STEP 8.** Re-attach fixture lens and turn power on.

**Sunshine Lighting Company**

744 Clinton Street Brooklyn, NY 11231, USA

T. 718.768.7000

F. 718.768.0970

[www.sunlite.com](http://www.sunlite.com)