

sunlite®

INSTALLATION INSTRUCTIONS

88916-SU, 88917-SU, 88918-SU, 88919-SU | LED FLOOD LIGHT FIXTURE



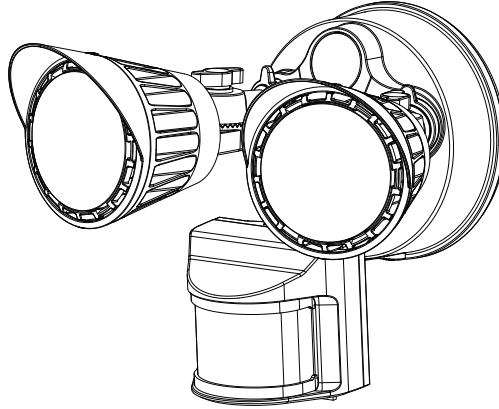
Please read and understand this entire manual before attempting to assemble, operate or install the product.

WARNING: Avoid fire or electrical shock. Follow installation instructions carefully. If unsure about electrical installation, consult a qualified electrician. Wear rubber-soled shoes and work on a sturdy ladder. Ground fixture to avoid potential electrical shock.

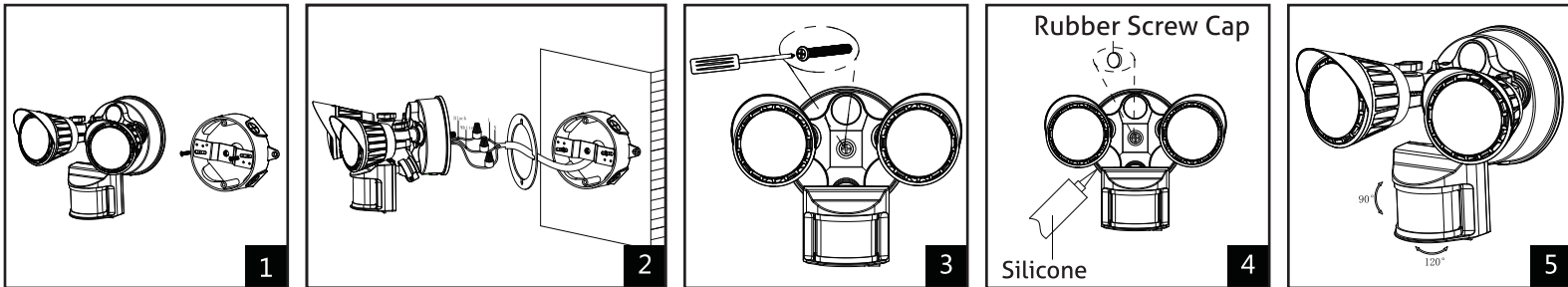
CAUTION: Turn off the power at fuse or circuit breaker box before installation and maintenance to avoid electric shock. This fixture is only suitable for 120-Volt 50/60Hz circuits. Fixture must be installed according to National Electric Code and local building codes. If you are unsure about wiring consult a qualified electrician. Not to be used with dimmers. THIS FIXTURE BODY IS ONE PIECE, DO NOT DISASSEMBLE OR MAKE ALTERATIONS.

This device complies with part 15 of the FCC Rules. Operation is subject to the following two conditions: (1) this device may not cause harmful interference, and (2) this device must accept any interference received, including that may cause undesired operation.

Retain these instructions for future maintenance reference.



Installation

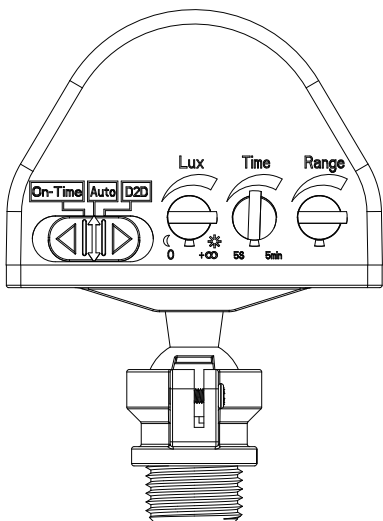


BEFORE PROCEEDING, PLEASE ENSURE POWER HAS BEEN SWITCHED OFF AT CIRCUIT BREAKER.

1. Install included mounting bracket to junction box with provided screws.
2. Connect supply wires using included wire nuts - Black fixture wire to the black power supply wire, white fixture wire to the white (neutral) supply wire, and yellow/green fixture wire to green supply ground wire. Ensure the wires are fed through the fixture gasket.
3. Install the fixture by aligning the center hole of the fixture to the corresponding hole on mounting bracket and using included screw to secure. (ensure the wires have been pushed into junction box prior to fixture installation.)
4. Place screw cap over mounting screw and apply waterproof silicone to the perimeter of the fixture to ensure weather seal.
5. Turn power on at circuit breaker.

Product functions:

- | | |
|----------------|---|
| On-Time | Constant on mode. |
| Auto | Motion detecting mode. |
| D2D | Dusk to Dawn mode. |
| Lux | Rotate knob to increase or decrease D2D light sensitivity. |
| Time | Rotate knob to increase or decrease AUTO time on (5s - 5min). |
| Range | Rotate knob to increase or decrease motion detect distance (19.5ft - 69ft). |



Sunshine Lighting Company

744 Clinton Street Brooklyn, NY 11231, USA

T. 718.768.7000

F. 718.768.0970

www.sunlite.com