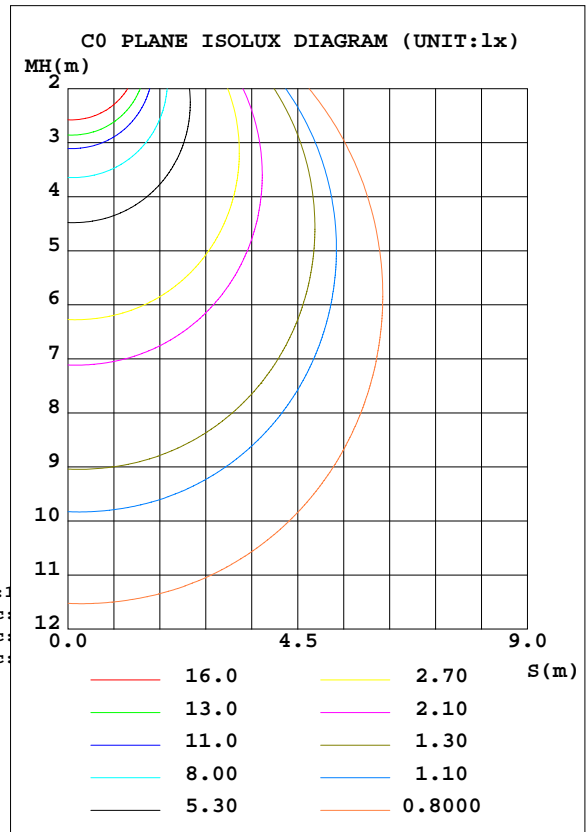
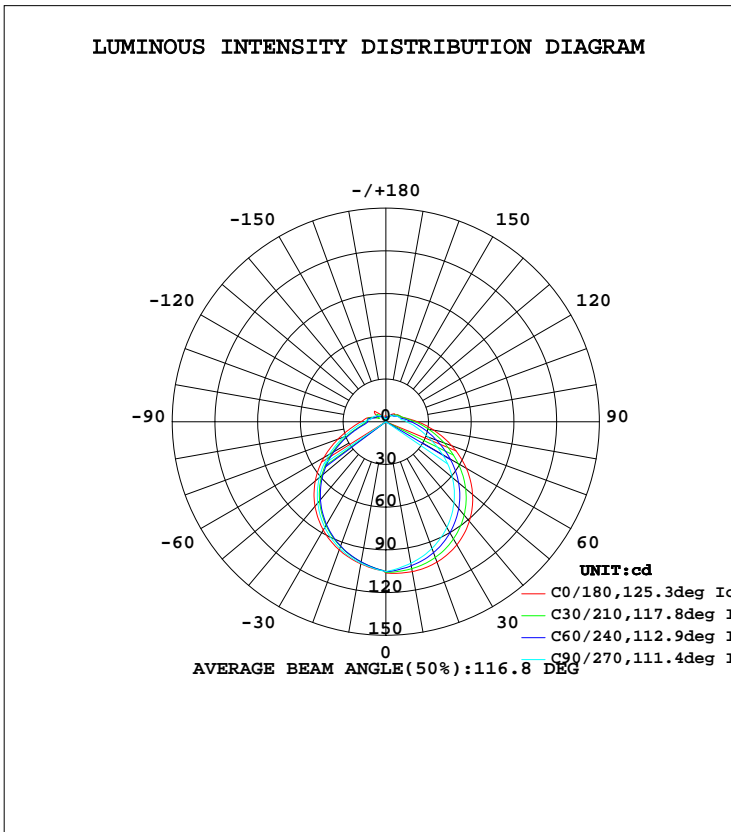


LUMINAIRE PHOTOMETRIC TEST REPORT

Test:U:119.9V I:0.1758A P:19.69W PF:0.9341 Lamp Flux:387.949x1 lm		
NAME:	TYPE:LED	WEIGHT:
SPEC.:	DIM.:	SERIAL No.:
MFR.:	SUR.:	PROTECTION ANGLE:

DATA OF LAMP		PHOTOMETRIC DATA				Eff: 19.70 lm/W
MODEL	81384-SU	I _{max} (cd)	106.9	S/MH(C0/180)	1.25	
NOMINAL POWER(W)	20	LOR(%)	100.0	S/MH(C90/270)	1.22	
RATED VOLTAGE(V)	120	TOTAL FLUX(lm)	387.95	η UP, DN(C0-180)	6.9,43.5	
NOMINAL FLUX(lm)	387.949	CIE CLASS	SEMI-D.	η UP, DN(C180-360)	6.8,42.7	
LAMPS INSIDE	1	η up(%)	13.7	CIBSE SHR NOM	1.25	
TEST VOLTAGE(V)	120	η down(%)	86.3	CIBSE SHR MAX	1.35	



C Range: 0 - 360DEG
 C Interval: 15.0DEG
 Test Speed: HIGH
 Temperature:25.3DEG
 Operators:
 Test Date:2023-07-19

γ Range: 0 - 180DEG
 γ Interval: 1.0DEG
 Test System:EVERFINE GO-2000A_V1 SYSTEM V2.0.291
 Humidity:65.0%
 Test Distance:7.500m [K=1.0000]
 Remarks:

ZONAL FLUX DIAGRAM

ZONAL FLUX DIAGRAM:

γ	C0	C45	C90	C135	C180	C225	C270	C315	γ	Φ zone	Φ total	Φ lum,lamp
10	106.8	103.7	100.9	99.91	101.3	99.91	100.9	103.7	0- 10	9.858	9.858	2.54,2.54
20	104.9	99.69	94.70	92.91	95.85	92.91	94.70	99.69	10- 20	28.15	38.01	9.8,9.8
30	99.78	92.66	85.76	83.43	87.87	83.43	85.76	92.66	20- 30	42.89	80.90	20.9,20.9
40	91.26	82.74	74.51	71.67	77.47	71.67	74.51	82.74	30- 40	52.31	133.2	34.3,34.3
50	79.56	70.20	61.09	57.79	64.80	57.79	61.09	70.20	40- 50	55.32	188.5	48.6,48.6
60	65.16	55.62	45.94	42.33	50.24	42.33	45.94	55.62	50- 60	51.51	240.0	61.9,61.9
70	49.21	41.02	31.70	27.56	35.78	27.56	31.70	41.02	60- 70	42.10	282.1	72.7,72.7
80	34.20	28.56	21.47	17.05	24.62	17.05	21.47	28.56	70- 80	30.91	313.0	80.7,80.7
90	22.36	19.49	14.75	12.95	17.62	12.95	14.75	19.49	80- 90	21.67	334.7	86.3,86.3
100	14.67	13.93	10.68	12.78	14.08	12.78	10.68	13.93	90-100	15.98	350.7	90.4,90.4
110	11.06	10.77	9.830	8.350	8.923	8.350	9.830	10.77	100-110	11.84	362.5	93.5,93.5
120	9.830	8.452	8.171	6.652	7.000	6.652	8.171	8.452	110-120	8.369	370.9	95.6,95.6
130	7.928	7.374	6.499	7.171	10.58	7.171	6.499	7.374	120-130	6.654	377.6	97.3,97.3
140	7.008	5.899	5.599	5.704	7.516	5.704	5.599	5.899	130-140	5.153	382.7	98.7,98.7
150	3.995	3.576	4.973	2.219	3.591	2.219	4.973	3.576	140-150	3.091	385.8	99.4,99.4
160	3.002	2.091	1.927	2.052	1.819	2.052	1.927	2.091	150-160	1.313	387.1	99.8,99.8
170	3.509	3.883	2.049	1.644	4.248	1.644	2.049	3.883	160-170	0.5655	387.7	99.9,99.9
180	1.629	1.618	1.621	1.641	1.652	1.641	1.621	1.618	170-180	0.2619	387.9	100,100
DEG	LUMINOUS INTENSITY:cd									UNIT:lm		

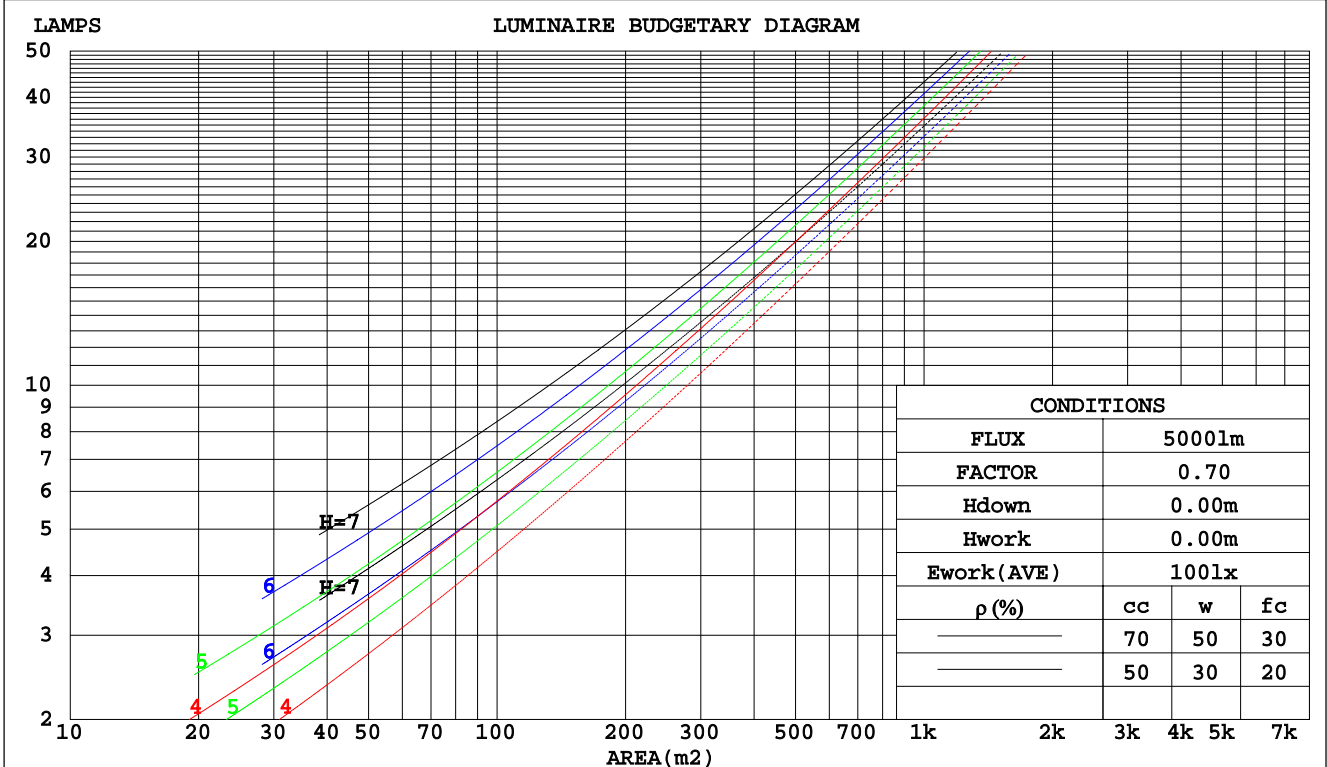
C Range: 0 - 360DEG
C Interval: 15.0DEG
Test Speed: HIGH
Temperature:25.3DEG
Operators:
Test Date:2023-07-19

γ Range: 0 - 180DEG
 γ Interval: 1.0DEG
Test System:EVERFINE GO-2000A_V1 SYSTEM V2.0.291
Humidity:65.0%
Test Distance:7.500m [K=1.0000]
Remarks:

CU AND LUMINAIRE BUDGETARY ESTIMATE DIAGRAM

Test:U:119.9V I:0.1758A P:19.69W PF:0.9341 Lamp Flux:387.949x1 lm		
NAME:	TYPE:LED	WEIGHT:
SPEC.:	DIM.:	SERIAL No.:
MFR.:	SUR.:	PROTECTION ANGLE:

pcc	80%			70%			50%			30%			10%			0
	50%	30%	10%	50%	30%	10%	50%	30%	10%	50%	30%	10%	50%	30%	10%	0
pw																0
pfc	20%			20%			20%			20%			20%			0
RCR	RCR:Room Cavity Ratio															
	Coefficients of Utilization(CU)															
0.0	1.16	1.16	1.16	1.11	1.11	1.11	1.03	1.03	1.03	.96	.96	.96	.89	.89	.89	.86
1.0	.98	.93	.89	.95	.90	.86	.88	.84	.81	.82	.79	.76	.76	.73	.71	.68
2.0	.85	.77	.71	.82	.75	.69	.76	.70	.66	.70	.66	.62	.66	.62	.59	.56
3.0	.74	.65	.59	.71	.63	.57	.66	.60	.54	.62	.56	.52	.57	.53	.49	.46
4.0	.65	.56	.49	.63	.55	.48	.59	.52	.46	.55	.49	.44	.51	.46	.42	.39
5.0	.58	.49	.42	.56	.48	.41	.52	.45	.39	.49	.43	.38	.46	.40	.36	.34
6.0	.52	.43	.36	.50	.42	.36	.47	.40	.34	.44	.38	.33	.41	.36	.32	.29
7.0	.47	.38	.32	.46	.37	.31	.43	.36	.30	.40	.34	.29	.38	.32	.28	.26
8.0	.43	.34	.28	.42	.34	.28	.39	.32	.27	.37	.31	.26	.35	.29	.25	.23
9.0	.39	.31	.25	.38	.30	.25	.36	.29	.24	.34	.28	.23	.32	.27	.23	.21
10.0	.36	.28	.23	.35	.28	.23	.33	.27	.22	.31	.25	.21	.30	.24	.20	.19



C Range: 0 - 360DEG
 C Interval: 15.0DEG
 Test Speed: HIGH
 Temperature: 25.3DEG
 Operators:
 Test Date: 2023-07-19

γ Range: 0 - 180DEG
 γ Interval: 1.0DEG
 Test System: EVERFINE GO-2000A_V1 SYSTEM V2.0.291
 Humidity: 65.0%
 Test Distance: 7.500m [K=1.0000]
 Remarks:

WEC AND CCEC

Test:U:119.9V I:0.1758A P:19.69W PF:0.9341 Lamp Flux:387.949x1 lm		
NAME:	TYPE:LED	WEIGHT:
SPEC.:	DIM.:	SERIAL No.:
MFR.:	SUR.:	PROTECTION ANGLE:

ρcc	80%			70%			50%			30%			10%			0
ρw	50%	30%	10%	50%	30%	10%	50%	30%	10%	50%	30%	10%	50%	30%	10%	0
ρfc	20%			20%			20%			20%			20%			0
RCR	RCR:Room Cavity Ratio						Wall Exitance Coefficients(WEC)									
0.0																
1.0	.354	.201	.064	.343	.196	.062	.322	.185	.059	.302	.174	.056	.284	.165	.053	
2.0	.314	.172	.053	.304	.167	.052	.285	.158	.049	.267	.150	.047	.251	.142	.045	
3.0	.283	.151	.045	.274	.147	.044	.257	.139	.042	.241	.132	.040	.226	.125	.039	
4.0	.257	.134	.039	.249	.130	.038	.233	.124	.037	.219	.117	.035	.205	.112	.034	
5.0	.235	.120	.035	.228	.117	.034	.214	.111	.033	.201	.106	.031	.188	.101	.030	
6.0	.217	.109	.031	.210	.106	.031	.197	.101	.029	.185	.096	.028	.174	.092	.027	
7.0	.201	.099	.028	.194	.097	.028	.183	.092	.027	.172	.088	.026	.162	.084	.025	
8.0	.187	.091	.026	.181	.089	.025	.170	.085	.024	.160	.081	.023	.151	.077	.023	
9.0	.174	.084	.024	.169	.082	.023	.159	.079	.022	.150	.075	.022	.141	.072	.021	
10.0	.163	.078	.022	.159	.077	.021	.150	.073	.021	.141	.070	.020	.133	.067	.019	

ρcc	80%			70%			50%			30%			10%			0
ρw	50%	30%	10%	50%	30%	10%	50%	30%	10%	50%	30%	10%	50%	30%	10%	0
ρfc	20%			20%			20%			20%			20%			0
RCR	RCR:Room Cavity Ratio						Ceiling Cavity Exitance Coefficients(CCEC)									
0.0	.295	.295	.295	.252	.252	.252	.172	.172	.172	.099	.099	.099	.032	.032	.032	
1.0	.289	.261	.236	.247	.224	.203	.169	.154	.141	.097	.089	.082	.031	.029	.026	
2.0	.281	.238	.201	.241	.205	.174	.165	.142	.121	.095	.082	.071	.031	.027	.023	
3.0	.274	.221	.179	.235	.191	.155	.161	.132	.109	.093	.077	.064	.030	.025	.021	
4.0	.266	.208	.164	.228	.180	.143	.157	.125	.101	.091	.073	.059	.029	.024	.020	
5.0	.258	.198	.154	.222	.172	.134	.153	.120	.095	.089	.070	.056	.029	.023	.018	
6.0	.251	.190	.147	.216	.165	.128	.149	.115	.090	.086	.068	.054	.028	.022	.018	
7.0	.244	.184	.141	.210	.159	.123	.145	.112	.087	.084	.066	.052	.027	.022	.017	
8.0	.238	.178	.137	.205	.154	.119	.142	.108	.085	.082	.064	.050	.027	.021	.017	
9.0	.232	.173	.134	.199	.150	.117	.138	.106	.083	.080	.062	.049	.026	.020	.016	
10.0	.226	.169	.131	.195	.147	.114	.135	.103	.081	.079	.061	.049	.026	.020	.016	

C Range: 0 - 360DEG
 C Interval: 15.0DEG
 Test Speed: HIGH
 Temperature:25.3DEG
 Operators:
 Test Date:2023-07-19

γ Range: 0 - 180DEG
 γ Interval: 1.0DEG
 Test System:EVERFINE GO-2000A_V1 SYSTEM V2.0.291
 Humidity:65.0%
 Test Distance:7.500m [K=1.0000]
 Remarks:

UGR(Unified Glare Rating) Table

Test:U:119.9V I:0.1758A P:19.69W PF:0.9341 Lamp Flux:387.949x1 lm										
NAME:					TYPE:LED			WEIGHT:		
SPEC.:					DIM.:			SERIAL No.:		
MFR.:					SUR.:			PROTECTION ANGLE:		
ceiling/cavity	0.7	0.7	0.5	0.5	0.3	0.7	0.7	0.5	0.5	0.3
walls	0.5	0.3	0.5	0.3	0.3	0.5	0.3	0.5	0.3	0.3
working plane	0.2	0.2	0.2	0.2	0.2	0.2	0.2	0.2	0.2	0.2
Room dimensions	Viewed crosswise					Viewed endwise				
x = 2H y = 2H	13.3	14.7	13.7	15.1	15.6	12.0	13.3	12.4	13.8	14.3
3H	15.4	16.7	15.9	17.1	17.7	13.7	14.9	14.2	15.4	15.9
4H	16.5	17.7	17.0	18.2	18.7	14.5	15.7	15.0	16.2	16.8
6H	17.6	18.8	18.2	19.3	19.8	15.4	16.6	15.9	17.1	17.6
8H	18.2	19.3	18.8	19.9	20.4	15.9	17.0	16.5	17.5	18.1
12H	18.9	20.0	19.5	20.5	21.1	16.5	17.6	17.1	18.1	18.7
4H 2H	13.8	15.0	14.3	15.5	16.0	12.8	14.0	13.3	14.5	15.1
3H	16.1	17.2	16.7	17.7	18.3	14.8	15.8	15.3	16.3	16.9
4H	17.4	18.4	18.0	18.9	19.5	15.8	16.7	16.3	17.3	17.9
6H	18.8	19.6	19.3	20.2	20.8	16.9	17.7	17.5	18.3	19.0
8H	19.5	20.3	20.1	20.9	21.6	17.5	18.3	18.1	18.9	19.5
12H	20.3	21.1	20.9	21.7	22.4	18.2	18.9	18.8	19.5	20.2
8H 4H	17.7	18.5	18.3	19.1	19.8	16.4	17.2	17.0	17.8	18.5
6H	19.3	20.0	20.0	20.7	21.4	17.8	18.4	18.4	19.1	19.8
8H	20.3	20.9	20.9	21.5	22.3	18.6	19.2	19.2	19.8	20.5
12H	21.3	21.9	22.0	22.5	23.3	19.5	20.0	20.1	20.7	21.4
12H 4H	17.8	18.5	18.4	19.1	19.8	16.5	17.3	17.2	17.9	18.6
6H	19.5	20.1	20.1	20.7	21.5	18.0	18.6	18.7	19.3	20.0
8H	20.5	21.0	21.2	21.7	22.4	18.9	19.5	19.6	20.1	20.9
Variations with the observer position at spacings:										
S = 1.0H	+ 0.1 / - 0.1					+ 0.1 / - 0.2				
1.5H	+ 0.2 / - 0.2					+ 0.2 / - 0.3				
2.0H	+ 0.2 / - 0.3					+ 0.2 / - 0.4				

CIE Pub.117 Corrected 387.9 lm Total Lamp Luminous Flux. (8log(F/F0) = -3.3)

C Range: 0 - 360DEG
 C Interval: 15.0DEG
 Test Speed: HIGH
 Temperature:25.3DEG
 Operators:
 Test Date:2023-07-19

γ Range: 0 - 180DEG
 γ Interval: 1.0DEG
 Test System:EVERFINE GO-2000A_V1 SYSTEM V2.0.291
 Humidity:65.0%
 Test Distance:7.500m [K=1.0000]
 Remarks:

UTILIZATION FACTORS TABLE

Test:U:119.9V I:0.1758A P:19.69W PF:0.9341 Lamp Flux:387.949x1 lm		
NAME:	TYPE:LED	WEIGHT:
SPEC.:	DIM.:	SERIAL No.:
MFR.:	SUR.:	PROTECTION ANGLE:

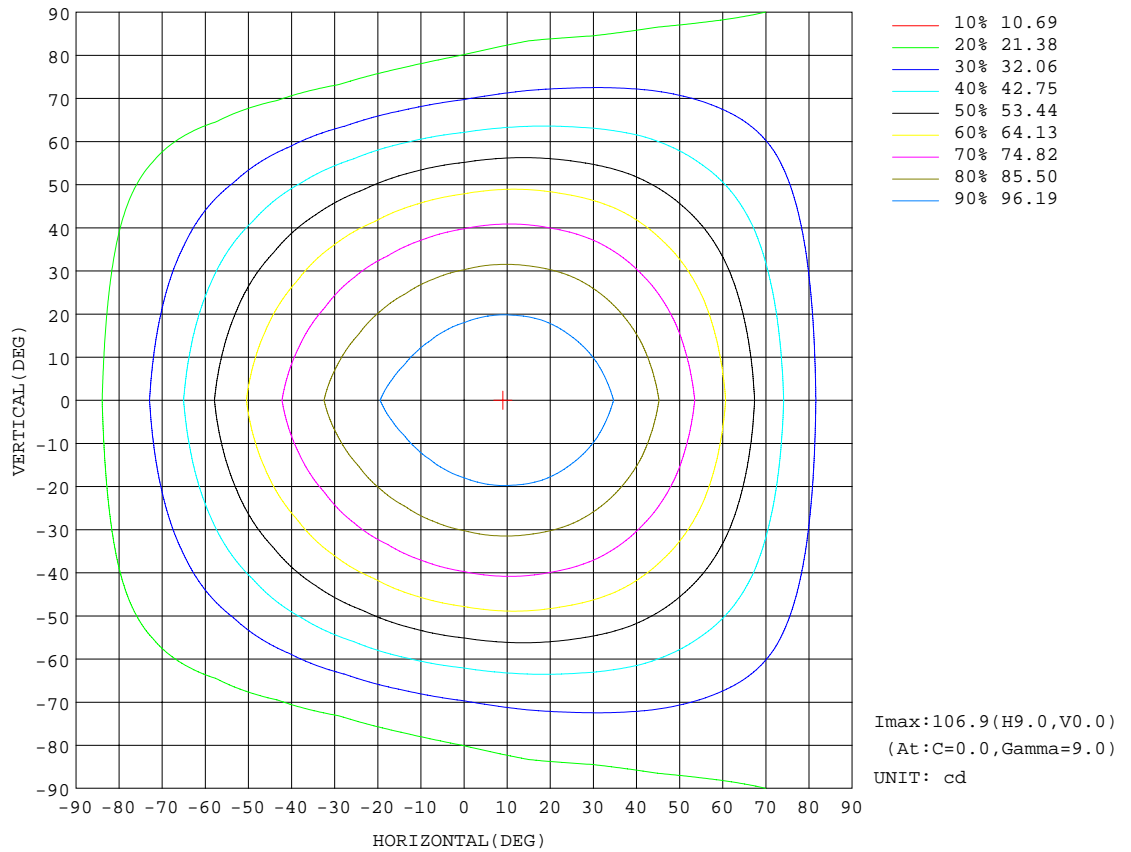
REFLECTANCE										
Ceiling	0.8	0.8	0.8	0.7	0.7	0.7	0.5	0.5	0.5	0
Walls	0.7	0.5	0.3	0.7	0.5	0.3	0.7	0.5	0.3	0
Working plane	0.2	0.2	0.2	0.2	0.2	0.2	0.2	0.2	0.2	0
ROOM INDEX	UTILIZATION FACTORS(PERCENT) k(RI) x RCR = 5									
k = 0.60	51	39	32	50	39	32	48	38	31	25
0.80	61	48	40	59	47	40	57	46	39	32
1.00	69	56	48	67	55	48	64	56	47	39
1.25	75	64	56	73	62	55	69	60	53	44
1.50	80	69	61	78	68	60	74	65	58	49
2.00	88	77	70	85	75	68	80	72	66	55
2.50	92	82	75	89	80	74	83	76	71	59
3.00	95	87	80	92	84	78	86	80	75	63
4.00	100	93	87	96	90	84	90	85	80	67
5.00	102	96	91	99	93	88	92	88	84	70
ROOM INDEX	UF(total)									Direct
According to DIN EN 13032-2 2004			Suspended				SHRNOM = 1.25			

C Range: 0 - 360DEG
 C Interval: 15.0DEG
 Test Speed: HIGH
 Temperature:25.3DEG
 Operators:
 Test Date:2023-07-19

γ Range: 0 - 180DEG
 γ Interval: 1.0DEG
 Test System:EVERFINE GO-2000A_V1 SYSTEM V2.0.291
 Humidity:65.0%
 Test Distance:7.500m [K=1.0000]
 Remarks:

ISOCANDELA DIAGRAM

Test:U:119.9V I:0.1758A P:19.69W PF:0.9341 Lamp Flux:387.949x1 lm		
NAME:	TYPE:LED	WEIGHT:
SPEC.:	DIM.:	SERIAL No.:
MFR.:	SUR.:	PROTECTION ANGLE:

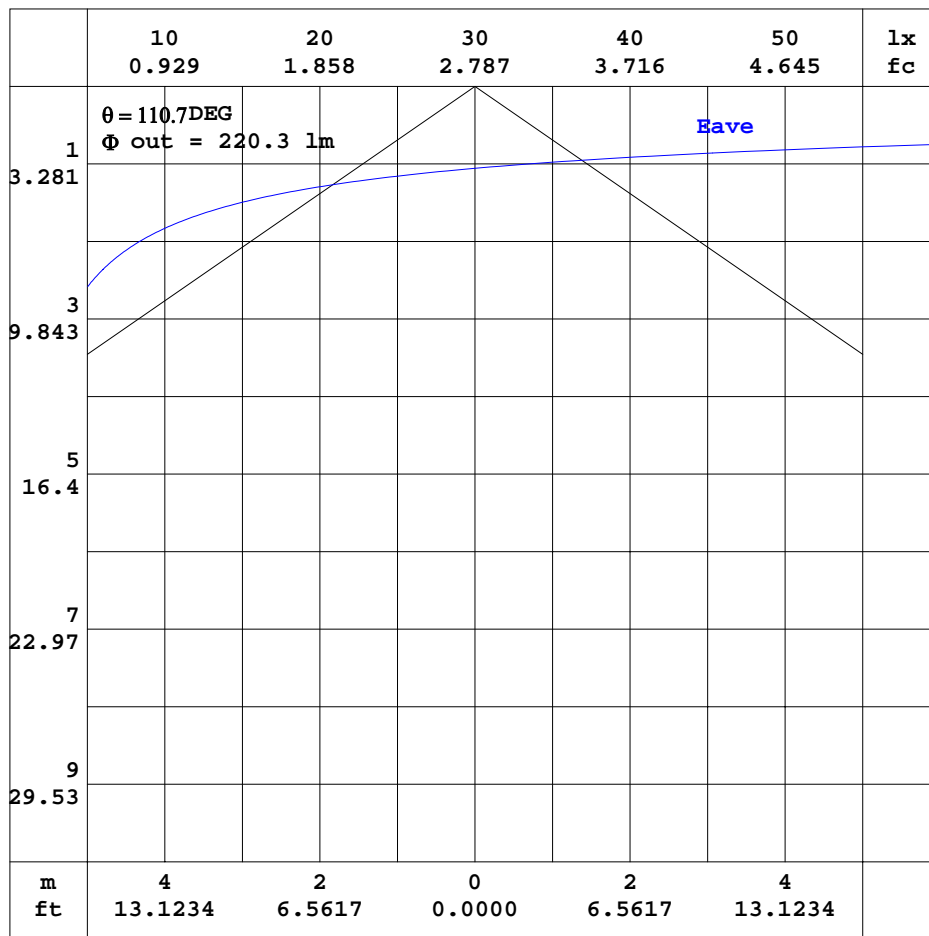


C Range: 0 - 360DEG
 C Interval: 15.0DEG
 Test Speed: HIGH
 Temperature:25.3DEG
 Operators:
 Test Date:2023-07-19

γ Range: 0 - 180DEG
 γ Interval: 1.0DEG
 Test System:EVERFINE GO-2000A_V1 SYSTEM V2.0.291
 Humidity:65.0%
 Test Distance:7.500m [K=1.0000]
 Remarks:

AAI CURVES

Test:U:119.9V I:0.1758A P:19.69W PF:0.9341 Lamp Flux:387.949x1 lm		
NAME:	TYPE:LED	WEIGHT:
SPEC.:	DIM.:	SERIAL No.:
MFR.:	SUR.:	PROTECTION ANGLE:



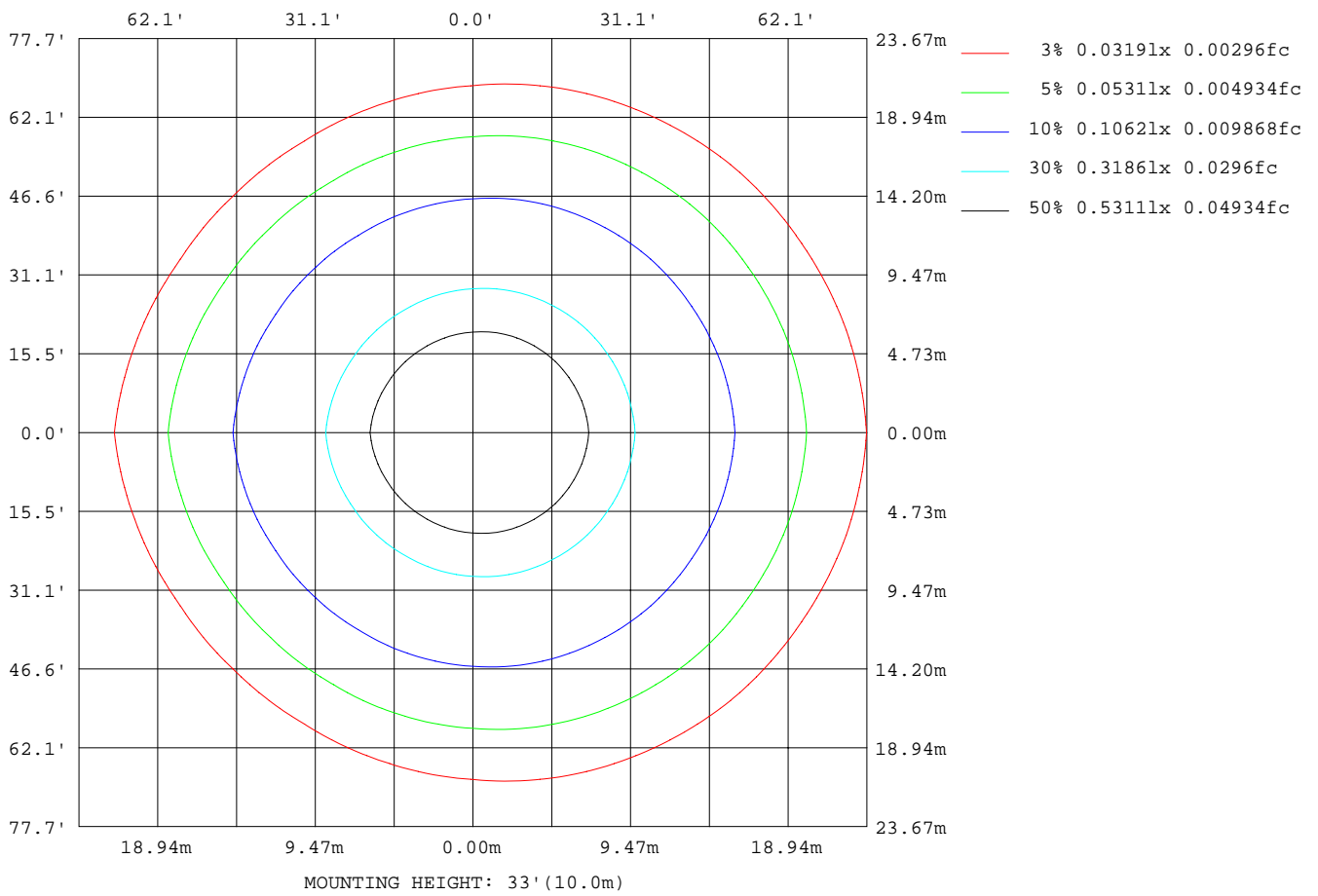
Note:The Curves indicate the illuminated area and the average illumination when the luminaire is at different distance.

C Range: 0 - 360DEG
 C Interval: 15.0DEG
 Test Speed: HIGH
 Temperature:25.3DEG
 Operators:
 Test Date:2023-07-19

γ Range: 0 - 180DEG
 γ Interval: 1.0DEG
 Test System:EVERFINE GO-2000A_V1 SYSTEM V2.0.291
 Humidity:65.0%
 Test Distance:7.500m [K=1.0000]
 Remarks:

ISOLUX DIAGRAM

Test:U:119.9V I:0.1758A P:19.69W PF:0.9341 Lamp Flux:387.949x1 lm		
NAME:	TYPE:LED	WEIGHT:
SPEC.:	DIM.:	SERIAL No.:
MFR.:	SUR.:	PROTECTION ANGLE:



C Range: 0 - 360DEG
 C Interval: 15.0DEG
 Test Speed: HIGH
 Temperature:25.3DEG
 Operators:
 Test Date:2023-07-19

γ Range: 0 - 180DEG
 γ Interval: 1.0DEG
 Test System:EVERFINE GO-2000A_V1 SYSTEM V2.0.291
 Humidity:65.0%
 Test Distance:7.500m [K=1.0000]
 Remarks:

LED Avg.L Report

Test:U:119.9V I:0.1758A P:19.69W PF:0.9341 Lamp Flux:387.949x1 lm		
NAME:	TYPE:LED	WEIGHT:
SPEC.:	DIM.:	SERIAL No.:
MFR.:	SUR.:	PROTECTION ANGLE:

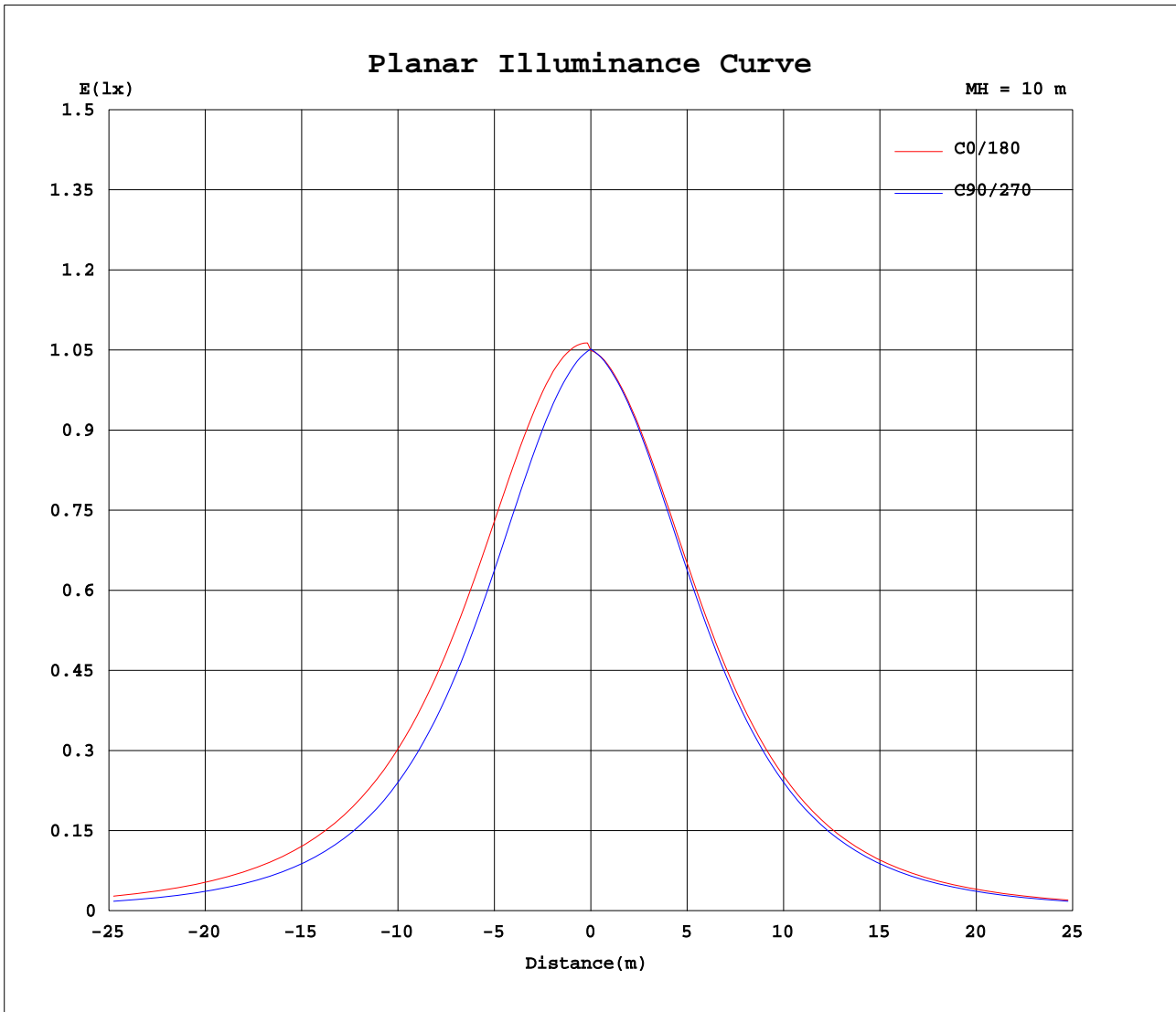
AvgL	cd/m2
L_0~180(65)av	1184
L_0~180(75)av	1374
L_0~180(85)av	2779
L_90~270(65)av	910
L_90~270(75)av	1004
L_90~270(85)av	2043
L_45(65)av	979
L_45(75)av	1083
L_45(85)av	2158

Standard: GB/T 29293-2012

C Range: 0 - 360DEG
 C Interval: 15.0DEG
 Test Speed: HIGH
 Temperature:25.3DEG
 Operators:
 Test Date:2023-07-19

γ Range: 0 - 180DEG
 γ Interval: 1.0DEG
 Test System:EVERFINE GO-2000A_V1 SYSTEM V2.0.291
 Humidity:65.0%
 Test Distance:7.500m [K=1.0000]
 Remarks:

Planar Illuminance Curve



C Range: 0 - 360DEG
 C Interval: 15.0DEG
 Test Speed: HIGH
 Temperature: 25.3DEG
 Operators:
 Test Date: 2023-07-19

γ Range: 0 - 180DEG
 γ Interval: 1.0DEG
 Test System: EVERFINE GO-2000A_V1 SYSTEM V2.0.291
 Humidity: 65.0%
 Test Distance: 7.500m [K=1.0000]
 Remarks:

LUMINOUS DISTRIBUTION INTENSITY DATA

Test:U:119.9V I:0.1758A P:19.69W PF:0.9341 Lamp Flux:387.949x1 lm		
NAME:	TYPE:LED	WEIGHT:
SPEC.:	DIM.:	SERIAL No.:
MFR.:	SUR.:	PROTECTION ANGLE:

Table--1

UNIT: cd

C(DEG) γ (DEG)	0	15	30	45	60	75	90	105	120	135	150	165	180	195	210	225	240	255	270
0	106	106	106	105	105	105	105	105	105	105	105	105	105	105	105	105	105	105	105
5	107	106	105	105	104	104	103	103	103	103	103	103	103	103	103	103	103	103	103
10	107	106	105	104	103	102	101	100	99.9	99.9	100	101	101	101	100	99.9	99.9	100	101
15	106	105	103	102	101	99.3	98.2	97.3	96.8	96.7	96.9	97.7	98.8	97.7	96.9	96.7	96.8	97.3	98.2
20	105	103	101	99.7	97.9	96.2	94.7	93.7	92.9	92.9	93.2	94.4	95.8	94.4	93.2	92.9	92.9	93.7	94.7
25	103	101	98.6	96.5	94.3	92.4	90.5	89.3	88.4	88.5	89.0	90.4	92.2	90.4	89.0	88.5	88.4	89.3	90.5
30	99.8	97.5	95.0	92.7	90.1	87.9	85.8	84.4	83.4	83.4	84.0	85.8	87.9	85.8	84.0	83.4	83.4	84.4	85.8
35	95.9	93.5	90.7	88.0	85.2	82.7	80.4	78.8	77.7	77.8	78.6	80.5	83.0	80.5	78.6	77.8	77.7	78.8	80.4
40	91.3	88.6	85.6	82.7	79.6	77.1	74.5	72.7	71.5	71.7	72.6	74.8	77.5	74.8	72.6	71.7	71.5	72.7	74.5
45	85.8	83.0	79.7	76.8	73.5	70.8	68.0	66.2	64.8	65.0	65.9	68.4	71.4	68.4	65.9	65.0	64.8	66.2	68.0
50	79.6	76.7	73.2	70.2	66.8	64.0	61.1	59.1	57.7	57.8	58.8	61.6	64.8	61.6	58.8	57.8	57.7	59.1	61.1
55	72.7	69.7	66.1	63.1	59.6	56.7	53.6	51.6	50.0	50.2	51.4	54.3	57.7	54.3	51.4	50.2	50.0	51.6	53.6
60	65.2	62.2	58.6	55.6	52.1	49.1	45.9	43.8	42.3	42.3	43.6	46.7	50.2	46.7	43.6	42.3	42.3	43.8	45.9
65	57.3	54.4	51.0	48.1	44.8	41.7	38.5	36.2	34.7	34.6	36.0	39.1	42.8	39.1	36.0	34.6	34.7	36.2	38.5
70	49.2	46.7	43.7	41.0	37.9	34.9	31.7	29.4	27.7	27.6	28.9	32.0	35.8	32.0	28.9	27.6	27.7	29.4	31.7
75	41.4	39.4	36.7	34.4	31.7	29.1	26.0	23.7	21.7	21.6	23.0	26.1	29.7	26.1	23.0	21.6	21.7	23.7	26.0
80	34.2	32.7	30.5	28.6	26.3	24.2	21.5	19.3	17.1	17.0	18.4	21.3	24.6	21.3	18.4	17.0	17.1	19.3	21.5
85	27.8	26.8	25.2	23.5	21.6	20.2	17.8	15.9	14.1	14.1	15.4	17.8	20.6	17.8	15.4	14.1	14.1	15.9	17.8
90	22.4	21.8	20.6	19.5	17.9	16.4	14.8	13.6	12.9	13.0	13.7	15.4	17.6	15.4	13.7	13.0	12.9	13.6	14.8
95	18.0	17.7	17.0	16.3	15.3	14.0	13.3	12.9	12.8	12.9	13.1	14.1	15.6	14.1	13.1	12.9	12.8	12.9	13.3
100	14.7	14.6	14.3	13.9	12.5	10.7	10.7	11.1	12.4	12.8	13.0	13.3	14.1	13.3	13.0	12.8	12.4	11.1	10.7
105	12.2	12.4	12.3	12.0	10.8	10.1	10.4	9.97	10.2	11.3	11.6	11.3	11.9	11.3	11.6	11.3	10.2	9.97	10.4
110	11.1	11.1	11.2	10.8	9.89	9.59	9.83	9.03	8.32	8.35	8.38	8.21	8.92	8.21	8.38	8.35	8.32	9.03	9.83
115	10.4	9.99	10.2	9.74	9.03	8.68	9.03	8.23	7.76	6.61	5.97	5.96	7.06	5.96	5.97	6.61	7.76	8.23	9.03
120	9.83	8.79	9.45	8.45	7.86	7.78	8.17	7.70	7.32	6.65	5.32	5.42	7.00	5.42	5.32	6.65	7.32	7.70	8.17
125	8.39	7.56	8.23	7.77	6.86	7.09	7.35	7.19	6.58	7.15	7.12	7.43	8.83	7.43	7.12	7.15	6.58	7.19	7.35
130	7.93	6.62	7.40	7.37	6.62	6.33	6.50	6.43	5.77	7.17	8.22	9.38	10.6	9.38	8.22	7.17	5.77	6.43	6.50
135	7.95	6.27	6.60	6.65	6.55	5.96	5.76	5.73	5.07	6.96	6.76	8.51	9.70	8.51	6.76	6.96	5.07	5.73	5.76
140	7.01	5.89	5.85	5.90	6.23	5.78	5.60	5.62	4.61	5.70	5.75	7.06	7.52	7.06	5.75	5.70	4.61	5.62	5.60
145	4.93	4.42	4.11	5.38	5.61	5.32	5.62	5.38	4.60	3.30	4.14	5.43	5.64	5.43	4.14	3.30	4.60	5.38	5.62
150	4.00	3.57	3.52	3.58	3.52	4.69	4.97	4.67	3.87	2.22	2.00	2.91	3.59	2.91	2.00	2.22	3.87	4.67	4.97
155	3.55	3.31	2.89	2.42	2.34	3.84	3.95	3.91	2.64	2.18	1.58	2.27	2.74	2.27	1.58	2.18	2.64	3.91	3.95
160	3.00	2.80	2.48	2.09	2.01	1.78	1.93	1.76	2.34	2.05	1.83	1.70	1.82	1.70	1.83	2.05	2.34	1.76	1.93
165	2.06	1.90	1.86	1.65	1.61	1.74	2.14	1.90	1.74	1.76	1.77	1.63	1.78	1.63	1.77	1.76	1.74	1.90	2.14
170	3.51	3.42	3.88	3.88	2.27	2.06	2.05	2.06	1.84	1.64	1.66	2.68	4.25	2.68	1.66	1.64	1.84	2.06	2.05
175	4.01	4.17	3.99	3.97	3.53	2.28	1.62	1.62	1.64	1.64	2.31	3.77	4.50	3.77	2.31	1.64	1.64	1.62	1.62
180	1.63	1.63	1.62	1.62	1.62	1.62	1.62	1.62	1.62	1.64	1.64	1.65	1.65	1.65	1.64	1.64	1.64	1.62	1.62

C Range: 0 - 360DEG
 C Interval: 15.0DEG
 Test Speed: HIGH
 Temperature:25.3DEG
 Operators:
 Test Date:2023-07-19

γ Range: 0 - 180DEG
 γ Interval: 1.0DEG
 Test System:EVERFINE GO-2000A_V1 SYSTEM V2.0.291
 Humidity:65.0%
 Test Distance:7.500m [K=1.0000]
 Remarks:

LUMINOUS DISTRIBUTION INTENSITY DATA

Test:U:119.9V I:0.1758A P:19.69W PF:0.9341 Lamp Flux:387.949x1 lm		
NAME:	TYPE:LED	WEIGHT:
SPEC.:	DIM.:	SERIAL No.:
MFR.:	SUR.:	PROTECTION ANGLE:

Table--2

UNIT: cd

C(DEG) γ (DEG)	285	300	315	330	345														
0	105	105	105	106	106														
5	104	104	105	105	106														
10	102	103	104	105	106														
15	99.3	101	102	103	105														
20	96.2	97.9	99.7	101	103														
25	92.4	94.3	96.5	98.6	101														
30	87.9	90.1	92.7	95.0	97.5														
35	82.7	85.2	88.0	90.7	93.5														
40	77.1	79.6	82.7	85.6	88.6														
45	70.8	73.5	76.8	79.7	83.0														
50	64.0	66.8	70.2	73.2	76.7														
55	56.7	59.6	63.1	66.1	69.7														
60	49.1	52.1	55.6	58.6	62.2														
65	41.7	44.8	48.1	51.0	54.4														
70	34.9	37.9	41.0	43.7	46.7														
75	29.1	31.7	34.4	36.7	39.4														
80	24.2	26.3	28.6	30.5	32.7														
85	20.2	21.6	23.5	25.2	26.8														
90	16.4	17.9	19.5	20.6	21.8														
95	14.0	15.3	16.3	17.0	17.7														
100	10.7	12.5	13.9	14.3	14.6														
105	10.1	10.8	12.0	12.3	12.4														
110	9.59	9.89	10.8	11.2	11.1														
115	8.68	9.03	9.74	10.2	9.99														
120	7.78	7.86	8.45	9.45	8.79														
125	7.09	6.86	7.77	8.23	7.56														
130	6.33	6.62	7.37	7.40	6.62														
135	5.96	6.55	6.65	6.60	6.27														
140	5.78	6.23	5.90	5.85	5.89														
145	5.32	5.61	5.38	4.11	4.42														
150	4.69	3.52	3.58	3.52	3.57														
155	3.84	2.34	2.42	2.89	3.31														
160	1.78	2.01	2.09	2.48	2.80														
165	1.74	1.61	1.65	1.86	1.90														
170	2.06	2.27	3.88	3.88	3.42														
175	2.28	3.53	3.97	3.99	4.17														
180	1.62	1.62	1.62	1.62	1.63														

C Range: 0 - 360DEG
 C Interval: 15.0DEG
 Test Speed: HIGH
 Temperature:25.3DEG
 Operators:
 Test Date:2023-07-19

γ Range: 0 - 180DEG
 γ Interval: 1.0DEG
 Test System:EVERFINE GO-2000A_V1 SYSTEM V2.0.291
 Humidity:65.0%
 Test Distance:7.500m [K=1.0000]
 Remarks: