

4FT LED STAIRWELL STRIP LIGHT FIXTURE WITH MOTION SENSOR

ITEM: 85529-SU

Project _____

Prepared by _____

Type _____

Date _____



*Optional
multi-function remote
Order No. 85530-SU

Product Description

This DLC listed stairwell fixture lowers energy usage by automatically adjusting light output based on stairwell occupancy. Combined with a simple, wireless occupancy sensor, this fixture saves up to 90% of energy and meets building and safety standards. The sensor is factory preset to 10% stand-by level when space is not occupied and turns full bright when someone enters. Sensor detection and brightness levels can be adjusted via remote control (part number 85530, sold separately). This fixture is available with EM option (part number 85500) and is ideal for your energy-saving projects

- White Steel Body
- Acrylic Diffuser Lens
- Instant On
- Integrated Microwave Sensor
- Suitable for Damp Locations
- Suspension and Surface Mounting

Note:

Factory Default Setting: Detection area 100%/Hold time 5s/Daylight threshold Disabled/Stand-by period ∞/Stand-by dimming level 20%

General Characteristics

<i>Fixture Life Hours</i>	50000 Hours
<i>Lumens Per Watt (LPW)</i>	122.00
<i>Life (based on 3hr/day)</i>	45.7
<i>Estimated Energy Cost</i>	\$2.17 per Year
<i>Safety Rating</i>	UL Listed - Damp Location
<i>Dimmable</i>	w/ Remote Only
<i>Dimming Type</i>	Remote Control

Fixture Characteristics

<i>Shape</i>	Linear
<i>Number of Lights</i>	1 - Light
<i>Mounting</i>	Surface/Suspension
<i>Use Location</i>	Indoor

Electrical Characteristics

<i>Watts</i>	18
<i>Volts</i>	120-277

LED Chip Manufacturer

Light Characteristics

<i>Brightness</i>	2200 Lumens
<i>Color Accuracy (CRI)</i>	>80
<i>Light Appearance</i>	Cool White
<i>Color Temperature</i>	4000K
<i>Beam Angle</i>	108°

Product Dimensions

<i>Size</i>	48"
<i>Item Dimensions (in)</i>	(W) 48.00 (H) 3.08 (D) 4.62
<i>Package Dimensions (in)</i>	(W) 49.13 (H) 4.84 (D) 4.09

Product Data

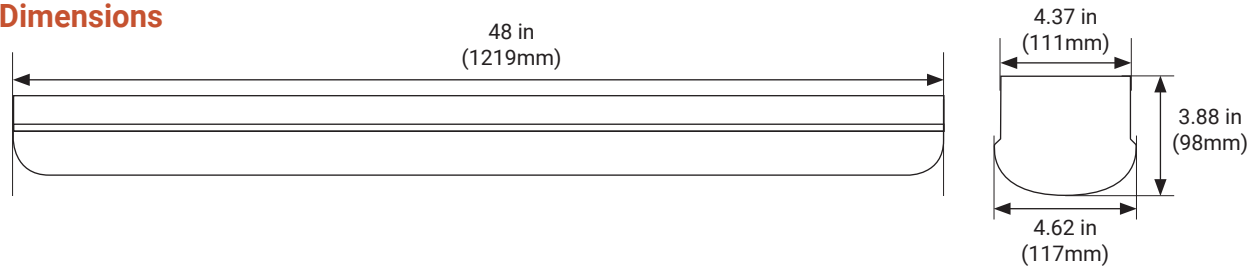
<i>Item Number</i>	85529-SU
<i>Case Quantity</i>	6
<i>Barcode on SKU</i>	653703855295
<i>Barcode on Case</i>	106537038550292
<i>Brand</i>	SUNLITE
<i>Description</i>	LFX/EC/4/18W/MV/40K/MS
<i>DLC File Number</i>	



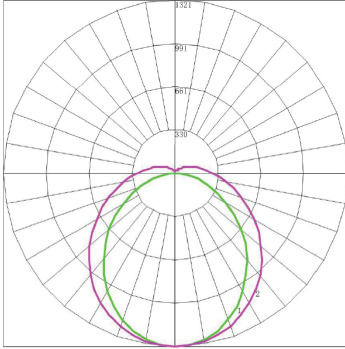
4FT LED STAIRWELL STRIP LIGHT FIXTURE WITH MOTION SENSOR

ITEM: 85529-SU

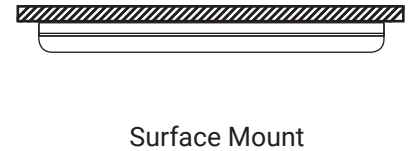
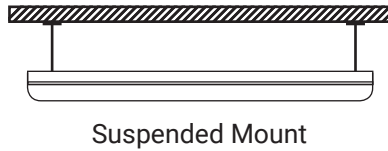
Product Dimensions



Photometric Graph



Mounting Options



Technical data

Input Voltage	120~277Vac
Input Frequency	47~63Hz
Power Factor	>0.9@60-100%load, refer to PF vs. Load curve
THD	<18%@60-100%load, refer to THD vs. Load curve
Input Current	0.24Amax@120Vac & Full-Load
Inrush Current	30A peak, 1.2ms duration, <0.25A2s@120Vac, Cold Start
Leakage Current	0.75mA max @277Vac 60Hz, UL8750
Surge Protection	Line to line 2kV, line to ground 4kV, IEC 61000-4-5
Current Accuracy	±5%lo
Ripple Current	Ip-p:8%lo max
Setup Time	0.75s max
Short Circuit	Auto recovery. The output recovers when short is removed
Auxiliary Power (Vaux)	12V+/-5%, 200mA max
EMC	FCC Part 15 Class B
Operating Temperature	-20°C~+55°C 10%RH~100%RH
Storage Temperature	-40°C~+85°C 5%RH~100%RH
MTBF	≥320,000 hours, 75°C case temperature
Lifetime	≥50,000 hours, 90°C case temperature
Case Temperature	90°C max, marked in the Tc point of label



4FT LED STAIRWELL STRIP LIGHT FIXTURE WITH MOTION SENSOR

ITEM: 85529-SU

Technical data

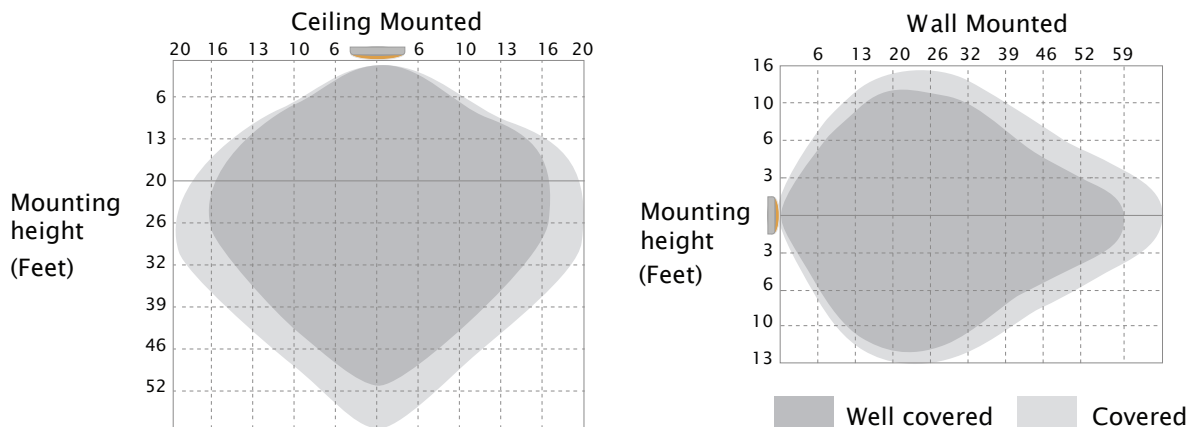
Stand-by power	≤0.5W
Detection area	25%/50%/75%/100%/Factory preset 100%
Hold time	0s/5s/30s/1min/3min/5min/10min/20min/30min
Daylight threshold	2Lux/10Lux/30Lux/50Lux/80Lux/120Lux/Disable
Stand-by period	0s/10s/30s/1min/5min/10min/30min/+∞
Stand-by dimming level	10%/20%/30%/50%/factory preset 10%
Microwave frequency	5.8GHz±75MHz
Microwave power	<0.3mW
Mounting height	Max.15m/49.2ft (ceiling mounted)
Detection range	Max.ø14m/45.92ft (ceiling mounted)
Operating temperature	-20°C~+60°C
Motion detection	0.5~1.5m/s
IP rating	IP20
Warranty	5 years

Note:

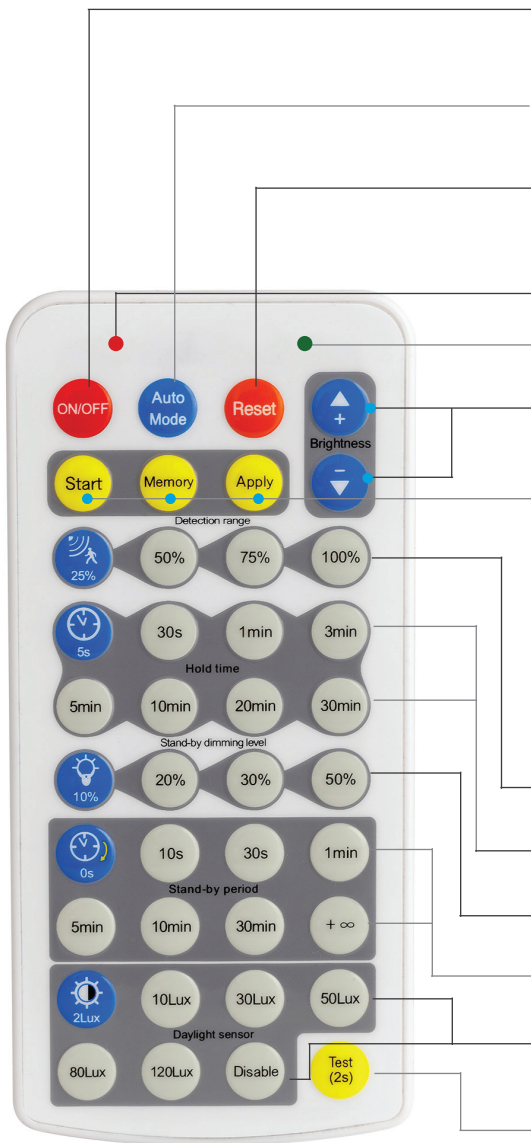
Factory Default Setting: Detection area 100%/Hold time 5s/Daylight threshold Disabled/Stand-by period ∞/Stand-by dimming level 20%

Detection Coverage

This figure indicates the maximum distance at the highest mounting height with 100% sensitivity.



Sensor Remote



ON/OFF

1. "ON/OFF" Turns fixture on/off.

Auto Mode

Press "Auto Mode" button, the sensor turn on and all settings remain the same as the latest status before the light was switched on/off.

Reset

1. Press "Reset" button, to reset to factory setting.
2.

Battery Indicator

Light will flash when remote is in use.

Apply new setting indicator

+/-

1. To adjust brightness 10-100% in on/off mode.
2. To adjust highest brightness 60-100% in sensor mode.

Start

Press "Start" to begin customizing scene, users can change detection range, daylight threshold, holdtime, standby dimming level and standby period.

Memory

1. Press "Memory" to save all settings.
2. The settings remained as saved.

Apply

1. Press "Apply" to deliver the saved setting.
2. Press "Apply" without "memory" will apply the setting one-time.
3. Settings should be complete a within 30S, or it exits memory mode.



Detection area (Chose detection area 100%/75%/50%/25%.)



Hold time (Chose holdtime 5s/30s/1min/3min /5min/10min/20min/30min .)



Stand-by dimming level (Chose stand-by dimming level 10%/20%/30%/50%.)



Stand-by period (Press to define stand-by period 0s/10s/30s/1min/5min/10min/30min/+ ∞
Note: "0s" means no standby period; "+ ∞ " means unlimited standby period.

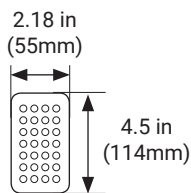


Daylight threshold (Press to define daylight level 2Lux/10Lux/30Lux/50Lux/80Lux/120Lux/Disable.)
Note: Disabling daylight sensor for threshold control. When motion is detected, the fixture will always turn ON, regardless of ambient light level.

Test (2s)

The button "Test (2s)" is for testing after commissioning. Pressing this button puts the sensor in test mode (hold time is only 2s)

Product Dimensions

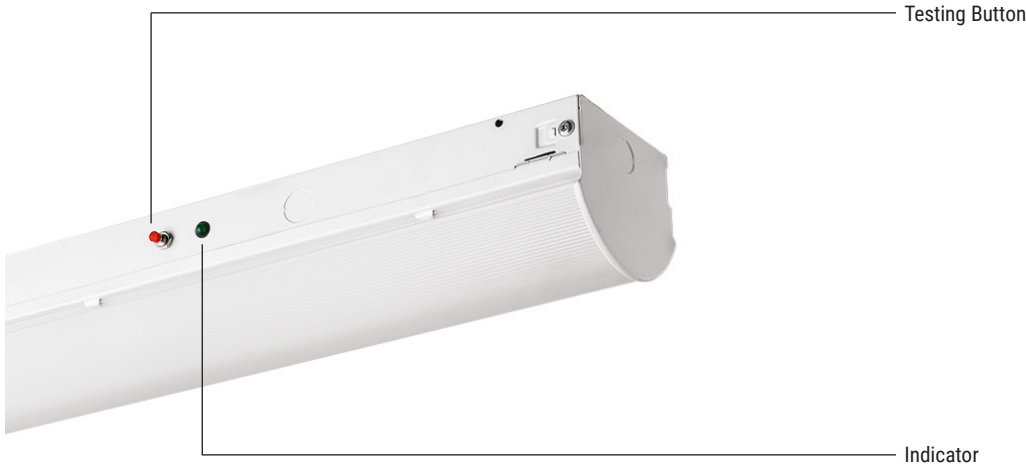


Remote



Build-in Emergency Back Up Battery

ITEM: 85500-SU | LFX/EC/4'/18W/MV/40K/EM/MS



- Internal Lithium Battery
- Over Charge Protection
- Over Discharge Protection
- Short Circuit Protection
- Indicator Shows a Variety Working Modes
- The Battery Meets 500 Cycles of Standard CH and Standard DCH

Technical data

Universal Input Voltage	100-277Vac, 50/60Hz
AC Input Current	100mA max
AC Input Power Rating	7.0W max
Output Current and Voltage	120-240mA 25-48Vdc
Output in EM Mode	6W/750lm
Emergency Time	≥1.5H
Test Switch Indicator Light	Illuminated Test Switch, Indicator Light
Battery	Li-ion battery-7.4V/2000mAH
Battery Charging Current	250mA
Charging Time	≥24Hours
Temperature Rating (Ambient)	Li-ion 0°C to + 40°C (32°F to 104°F)
Dimensions	7.4"x1.5"x1.1"(188mmx38mmx29mm)
Warranty	5 years