

Please read and understand this entire manual before attempting to assemble, operate or install the product.

**WARNING:** Avoid fire or electric shock. Follow installation instructions carefully. If unsure about electrical installation, consult a qualified electrician. Wear rubber-soled shoes and work on a sturdy wooden ladder. Ground fixture to avoid potential electric shock. Handle metal parts carefully to prevent cuts. To avoid a hazard to children, account for all parts and destroy all packing materials.

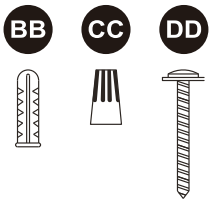


This device complies with part 15 of the FCC rules. Operation is subject to the following two conditions: (1) This device may not cause harmful interference, and (2) this device must accept any interference received, including interference that may cause undesired operation.

**CAUTION:** Turn off the power at fuse or circuit breaker box before installation and maintenance. NOTE: This fixture is suitable for 120Volts fused circuit. Fixture must be installed according to National Electric Code and local building codes. If you are unsure about wiring, consult a qualified electrician. Suitable for wet Locations.



## Introduction

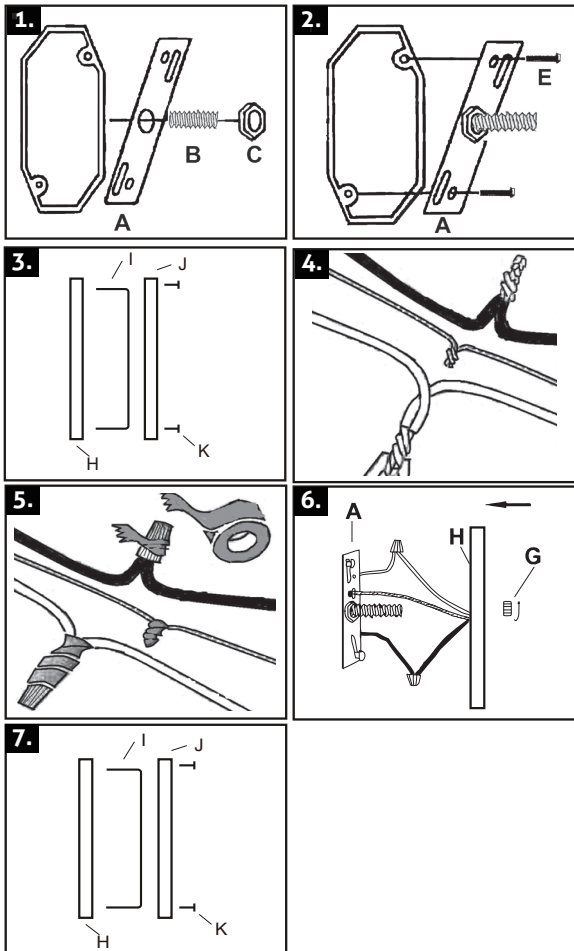


Part	Item Name
A	LED TALL PACK W/PHOTO CONT
BB	Drywall Anchors
CC	Wire Nuts
DD	4X40MM Screws

Before beginning assembly and installation of product, make sure all parts are present. Compare parts with package contents list and diagram above. If any part is missing or damaged, do not attempt to assemble, install or operate the product. Contact customer service for replacement parts.

MIN 75°C SUPPLY CONDUCTOR

## Installation



1. Fix the support nipple(B) with nuts(C) onto the mounting strip(A).

2. Attach mounting strip(A) to the junction box using outlet box screws(E).

3. Remove the Diffuser(I) and Frame(J) from the Canopy(H) by loosening four thumb screws(K).

4. Strip 1/2 inch of insulation from wire ends. Twist stripped ends together with pliers black to black (power) and white to white (neutral). Attach copper wire to ground wire.

5. Attach wire nuts(D). Tape wire nuts(D) and wires together with electrical tape.

6. Attach the fixture to the ceiling by aligning the nipple that protrudes from the mounting strip(A) to the hole in the ceiling plate(H). Screw the cap nut(G) onto the protruding nipple until the fixture is held firmly to the ceiling.

7. Set Diffuser(I) into frame(J). Position frame(J) over back canopy(H) and screw with four thumb screws(K).

**Sunshine Lighting Company**

744 Clinton Street Brooklyn, NY 11231, USA

T. 718.768.7000

F. 718.768.0970

www.sunlite.com