

ST Series

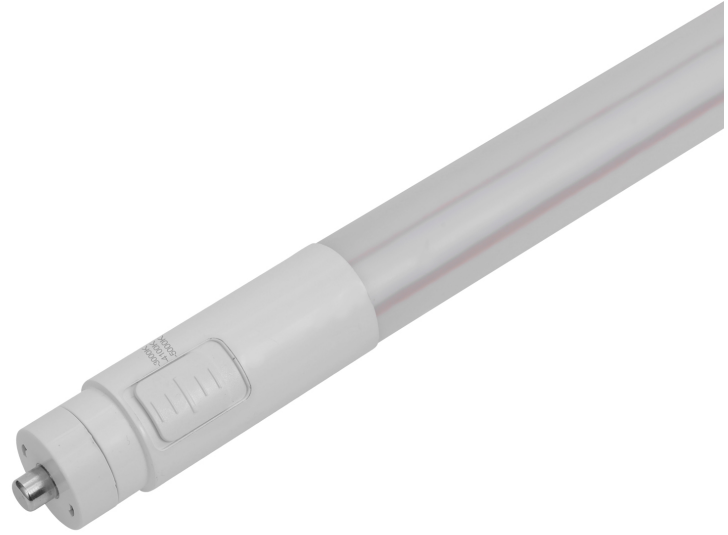
Bypass Dual End

DESCRIPTION:

Highlighting a dedication to quality and integrity, the Sunlite product line includes light bulbs of LED, linear fluorescent, compact fluorescent, incandescent, HID metal halide, halogen, decorative, and specialty lamps. In addition, the Sunlite line includes various indoor and outdoor commercial, Industrial, and residential fixtures. Electrical products include extension cords, socket adapters, wall plates, receptacles and switches, dimmers, timers, surge protectors, and much more.

FEATURES:

-
-
-
-
-



SPECIFICATIONS:

General Characteristics

Bulb Shape	T8
Average Rated Hours	50000
Finish	White
Base	Single Pin (FA8)
Average Life Span Years	46
Dimmable	No
Dimming Type	Not Dimmable
Material	Glass

Product Dimensions

Size	8 Foot
-------------	--------

Product Data

Case Unit Rate	10
Pack Size	1
Item UPC	653703884448
Warranty Years	5
Package Type	Sleeve

Electrical Characteristics

Amps	.390
Watts	42
Volts	120-277
Power Factor	0.9
Temperature	-4°F - 113°F

Light Characteristics

Lumens Brightness	5500
Color Rendering Index CRI	83
Coating	PET
Emitted Color	CCT Tunable
Color Temperature Kelvin	30K/35K/40K/50K/65K
Beam Angle	200°

Additional Features

Safety Rating Mark	UL Listed - Damp Location
Safety Rated For Canada	Yes
Safety Rated For USA	Yes

ACCESSORIES:

Catalog # 88450-SU
R17D