

**Plug-In****Sunlite 22 Watt FDL 2-Pin Quad Tube,  
GX32D-2 Base, Warm White**

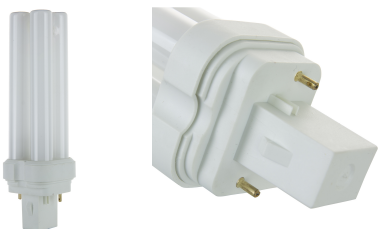
FDL 2-Pin Quad Tube

**DESCRIPTION:**

Sunlite compact fluorescent plug-in lamps are available in a wide range of sizes, wattages, color temperatures and pin configurations. This Sunlite 22 watt compact fluorescent FDL plug-in light bulb offers a light output of 1050 lumens and a color accuracy of 80 CRI . It has an average lamp life of 10,000 hours. The 3000K color temperature produces a warm white light. This lamp fits a GX32D-2 socket. Make sure the base precisely matches your fixtures socket as this lamp will only work with the specific external electronic ballast it is a designed for.

**FEATURES:**

- 22 Watt, 1050 Lumens, 80 CRI
- 10,000 Hours Average Lamp Life
- 2-Pin & 4-Pin GX32D-2 Base
- 3000K Color Temperture, Warm White Color
- 



SPECIFICATIONS:

General Characteristics

Bulb Shape	FDL
Average Rated Hours	10000
Base	2-Pin (GX32d2)
Average Life Span Years	9

Electrical Characteristics

Watts	22
-------	----

Light Characteristics

Lumens Brightness	1050
Color Rendering Index CRI	80
Emitted Color	Warm White
Color Temperature Kelvin	3000K

Product Dimensions

MOL (in)	6.17
Diameter (in)	1.73"
Item Dimension (in)	(W) 1.73 (H) 6.17 (D) 1.73
Package Dimension (in)	(W) 1.9 (H) 6.6 (D) 1.9
Package Weight (lb)	0.200

Product Data

Case Unit Rate	25
Pack Size	1
Item UPC	653703057507