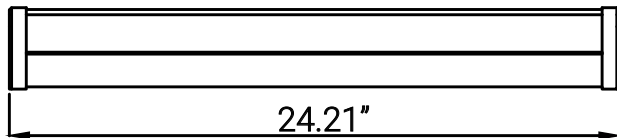
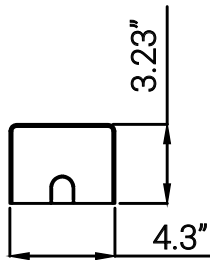
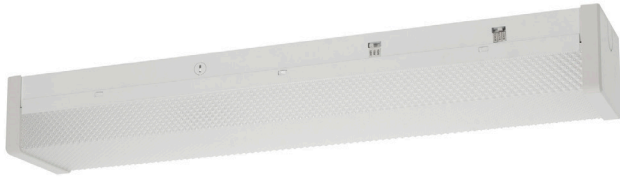


82115-SU



SF/WR4/LN/24/MW/93S/MV/WH

SF/WR4/LN/24/MW/93S/MV/WH 24" Linear Fixture, Selectable CCT and Wattage



Project: _____
Type: _____
Catalog #: _____
Date: _____
Comments: _____

Technical Specifications

Photometrics

Lumen	1150/1725/2070
Emitted Color	CCT Selectable
Color Temp	30K/40K/50K
Color Rendering Index (CRI)	90
Beam Spread	110°
Lifespan	50000

Electrical

Watt	10/15/2018
Input Voltage	120-277
Power Factor	0.9
Dimmable	0-10V Low Voltage

Ratings / Certifications

Safety Certification	ETL - Damp Location
DLC	S-K4RCNM
Operating Temperature	-4°F to 122°F
Warranty	5 Years

Construction

Fixture Material	Steel
Fixture Finish	White
Lens Material	Plastic
Lens Finish	Frosted
Shape	Linear
Mounting	Surface